

Shire

Your local community newspaper with news and views from the Shirehampton area

No. 585 - October 2020 www.shire.org.uk 5,000 copies monthly

Have you got a job that needs doing? Go to YOUR LOCAL EXPERTS section on pages 16-18 to find a local expert who can help.

Police Seek Witnesses to Portway Collision on 6th September & Meet the Local Heroes!
See Page 8

A Horse for the Daisy Field

Friends of Lamplighters Marsh would like to purchase and organize a memorial to commemorate the Remount Centre and Shirehampton's role in WWI. A warhorse memorial statue constructed from reclaimed horseshoes by local farrier/sculptor Jason Baggs, would be mounted in the Daisy Field and clearly visible from the Portway.

Stephen Judd, Chairman of Friends of Lamplighters Marsh, writes:

Shirehampton was one of the largest Remount Centres in the UK with over 300,000 horses passing through Shirehampton and Avonmouth between 1914 and 1918. The Remount Centre was set up to import, train and send horses onto active service during the war.

This proposal will raise the profile of the nature reserve and enhance its cultural and heritage value. It will provide an important contribution to the public realm in Shirehampton and its history in commemorating the World War I Remount Centre.

Photographic impression of the statue in situ.



Pembroke Road Garage

A friendly, family-run business offering:

- MOTs & free retests
- Servicing
- Repairs & Diagnostics
- Tyres
- Aircon Servicing

All makes of cars, motorcycles and light commercial vehicles
Free estimates • Courtesy vehicles

**Pembroke Road,
Shirehampton BS11 9SB**

Tel: 0117 982 7396

Mob: 07798898721

DEVEREUX & Co
SOLICITORS

FREE INITIAL INTERVIEW

0117 938 0222

Your LOCAL solicitors



- Conveyancing
- Wills & Probate
- Divorce

www.devlaw.co.uk

28 High Street, Shirehampton, Bristol BS11 0DL
52A High Street, Westbury-on-Trym, Bristol BS9 3DZ

Shire

Official address:

The Library, Public Hall, Station Road,
Shirehampton, Bristol BS11 9TU.

Please note the Shirehampton Librarian

Telephone number is: 0117 903 8570

'SHIRE' telephone numbers for info and advice

adverts@shire.org.uk 07580 776199

treasurer@shire.org.uk 0117 962 0297

Requests for SHIRE by Post 0117 904 3037

General enquiries 07580 776199

distribution@shire.org.uk 0117 982 0478

Internet address www.shire.org.uk

Submit articles editor@shire.org.uk

Advertising adverts@shire.org.uk

Telephone enquiries: **Weekdays 9am – 7pm**

ADMINISTRATIVE COUNCIL

Mrs R. Slater, Chairman

Mrs J. Helme, Secretary

Mrs B. Dowsett, Treasurer

Ed Amphlett, Advertising Manager

Mrs. Marilyn Gorry, Social Events

Mrs. Bobbie Perkins, Distribution

Editors: Mrs Fiona Grinham, Mr Bill Constable,

Mrs Jill Williamson, Mrs. Sarah Matthews,

Mr. Robin Matthews, Mrs. Jackie Hares

Artwork: Iain Chaffey of Crimson Goose Design

Photographers: Kathryn Courtney, Bob Pitchford

Website Manager: Mr Robin Matthews

N.B. To meet the deadline with our typesetters, all written copy should be submitted by email or to the Library by the **10th of the month** before it appears in print, or it may not be included in the next edition.

While advertisements in this paper are accepted in good faith, readers are advised to make their own enquiries and assessment. We request that all adverts are supplied in the correct format and size or there may be a charge should you require artwork to be created. Price on application.

Unless otherwise stated, all material appearing in SHIRE is the copyright of SHIRE Publications. The views and opinions expressed in these articles are those of the individual authors and do not necessarily reflect the official policy or position of Shire.

EDITORIAL POLICY

We welcome contributions for publication in 'SHIRE' but reserve the right to edit any copy received.

Any material published is at the editor's discretion and may also be included on our website www.shire.org.uk unless the copy is clearly marked 'not to be included on the world wide web'.

Contributions submitted to: editor@shire.org.uk

For our current privacy policy visit our website at www.shire.org.uk/privacy_policy

ADVERTISERS!

Contact: adverts@shire.org.uk

Telephone: 07580 776199



SHIREHAMPTON PUBLIC HALL

Station Road, near shops

**HALL, LARGE AND SMALL
MEETING ROOMS FOR HIRE**

For availability and bookings contact

The Hall Manager 0117 982 9963

www.shirepubhall.org.uk

SHIRE PUBLIC INFO FOR OCTOBER

CORONAVIRUS INFO AND ADVICE

CHANGES TO GOVERNMENT RULES ON SEEING FAMILY AND FRIENDS

New rules were introduced by the government on 14 September:

You must not meet with people from other households in groups of more than six. These new rules apply to all gatherings indoors and outdoors, including private homes. This limit will be enforceable in law.

There will be exceptions where groups can be larger than six people. For example, the limit will not apply to individual households or support bubbles of more than six.

Venues following Covid-19 Secure guidelines can host more than six people in total, but no one should visit in a group of more than six. When you visit one of these places, such as a pub or restaurant, you should provide your contact details to the organiser, so that you can be contacted if needed by the NHS Test and Trace programme.

New cases of coronavirus continue to be reported in Bristol, with the case rate sitting at 14.2 per 100,000 of our city's population as of 18th September. The current infection rate for the South West is between 0.9 and 1.2.

We are pleased to be welcoming university students to Bristol. This year, university will be very different for new and returning students amid the ongoing pandemic. Both the University of Bristol and the University of the West of England have been working extremely hard to ensure a warm welcome and safe environment for all. New hygiene measures are in place and Covid-19 outbreak plans have been developed.

OUTBREAKS AT SCHOOLS

Since children have returned to schools across Bristol this month, seven schools have reported cases of coronavirus, with eight confirmed cases in total. All students and those in close contact with these cases are now self-isolating and guidance and advice for their parents is available from the schools. The affected schools have acted in a quick and appropriate manner, following their own Covid-19 plans to make sure the situation is managed as best as possible. We understand this will be concerning for families sending their children to school during this time, and we will continue to keep you all informed and up to date on the latest regarding outbreaks at schools

CAR SHARING

Car sharing is one of the more common ways that Covid-19 can be spread, so please avoid it where possible. However, if you have no alternative means of travel, please make sure you stay safe on your journey by:

- Using a travel buddy system – always share with the same small group
- Sitting as far away from other passengers as possible
- Keeping windows open
- Touching as few surfaces as possible
- Avoiding eating or drinking in the car
- Wearing a face covering
- Storing a 'cleaning bag' in your boot with wipes and hand sanitiser for use before and after each journey.

WORKS TO BUILD A NEW BUS LANE ON ANCHOR ROAD

Work to make bus journeys faster and more reliable on Anchor Road started in September and are expected to take around four months, with completion due in late January 2021. An extension to the outbound bus lane is being built along Anchor Road, following work done last year to create an inbound bus lane.

The road will be resurfaced in places with safety improvements carried out on the pedestrian crossing outside We the Curious. The project is part of Bristol City Council's vision to transform

Bristol's transport network, creating cleaner air, more reliable public transport, and safer walking and cycling journeys.

Works will take place between the junctions of Explore Lane and College Green, and throughout there will always be one inbound and one outbound lane open to all traffic. The two main bus stops on Anchor Road (A1 and A2 in both directions) will be closed for the whole period of works with temporary stops in use instead.

PLAN YOUR NEXT VISIT TO BRISTOL MUSEUMS

Museums now open for the first time since Covid-19 pandemic began. **M Shed, Bristol Archives and Bristol Museum & Art Gallery** have reopened their doors for the first time since the Covid-19 pandemic forced them to close. **All visits must be booked in advance.** Entry remains free, however donations are welcomed.

ARE YOU A BUSINESS OWNER?

Businesses can now sign up for Kickstart, a new government scheme designed to reduce unemployment for 16-24 year olds. Under the scheme, businesses can employ young people on a placement for six months, and the government will pay their wages, up to a cap of 25 hours per week. **Businesses can sign up on the government website.**

NOTICE of AGM – SHIREHAMPTON COMMUNITY ACTION FORUM (SCAF)

WILL BE HOLDING ITS AGM ON

WEDNESDAY 7th OCTOBER 2020 at 7pm

At SHIRE PUBLIC HALL, STATION ROAD, SHIREHAMPTON,
BRISTOL BS11 9TU

Due to the current Coronavirus restrictions and guidelines seating arrangements will comply with social distancing measures and the meeting will be conducted in accordance with all current guidelines.

Please email/phone to let me know you will be attending.

Ash Bearman, Community Development Officer

Tel: 0117 982 9963 • Email: ash@shirecaf.org.uk

PUBLIC HALL AGM

**Shirehampton
Public Hall will hold
its Annual General
Meeting**

8th October 2020 • 7pm
Shirehampton Public Hall

**Everybody is
welcome!**



the place for you...

Autumn sales, lettings, mortgages
& conveyancing.

Call: 0117 938 0611



ocean
estate agents
oceanhome.co.uk

The *Shire* Community Page

Cotswold Community Association Back in Business Again

We finally resumed activities on Monday 3rd August, having conducted Risk Assessments with committee members and our Class Instructors. So, Pilates and Personal Fitness have started, and Keep Fit started on Wednesday 9th September.

We've also resumed our **Film Nights**, weekly **Bingo**, and monthly **Coffee Mornings**. We're also trialling monthly **"Breakfast Lite" Club**, serving Bacon and Egg Rolls and Tea and Coffee on **Sunday 4th October**. Note: **BOOKING IS ESSENTIAL FOR FILM NIGHTS AND THE BREAKFAST CLUB**. Please contact the email address or phone number below.

All activities are in line with government guidelines. This includes temperature taking on entry, hand sanitiser use too, and a one way system on entering and leaving the hall. We will

also take your name and phone number for Track and Trace purposes. Unfortunately, we're not able to take bookings for parties in the hall, as it's our responsibility to ensure the guidelines are adhered to. If we're able to relax this in the future, be assured we will as soon as practically possible.

We'd encourage you to join our mail list by emailing cotswoldca@gmail.com or leaving a message on 07943-401575.

Hope to see you soon at the Cotswold.



Cotswold Community Association
Dursley Road, Shirehampton,
Bristol, BS11 9XH
Registered charity no. 1101427

REGULAR EVENTS

MONDAY

Pilates 9:30-10:30am

Personal Fitness 6:30-7:30pm

TUESDAY (1st & 3rd of each month)

Film Night 7:30pm*

WEDNESDAY

Keep Fit 10:30-11:30am

Personal Fitness 5:15-6:15pm

Pilates 6:30-7:30pm

THURSDAY

Bingo 2:30pm

Personal Fitness 7-8pm

Table Tennis 8pm

FRIDAY

Keep Fit 10:30-11:30am

SATURDAY (2nd of each month)

Coffee Morning 10am

*Booking must be made, either by email:

cotswoldca@gmail.com

or leave a message on **07943 401575**

For more details and regular updates,
join our mail list by emailing
cotswoldca@gmail.com

A NEW FACE AT THE CO-OP

I'm Chris, the new store manager of the Co-op Shirehampton. I am a local man and have worked for the Co-op in Shirehampton previously as a youngster and again as assistant manager.

I have now returned with the vision to support the community and serve our customers to the highest expectations. The store is very much at the heart of the community and I aim to ensure this continues.

Please come and say hello and share your feelings and what you need from us at the Co-op. Keep a lookout in store for times and dates when I will

be free to meet and speak with you and share ideas on improving the store and community.

We will ensure all COVID measures are maintained and excited to move into the festive season.

See you all soon in store.

Chris Gilbert, Store Manager



©Chris Gilbert

Thomas Davis
EST. 1840
FUNERAL DIRECTORS

0117 982 6100

50 High Street,
Shirehampton,
Bristol, BS11 0DJ



Your local Family managed and
operated Funeral Services

Dedicated to serving the local
community, flexible and responsive
to your needs offering a valuable
and personal service

www.bristolfunerals.co.uk

Let Our Family Care For Your Family

**ADVERTISE
YOUR
BUSINESS**

**FROM AS LITTLE AS
£6.80 PER MONTH!**

CONTACT

07580 776199

or

adverts@shire.org.uk

Letters to the Editor

LETTER FROM THE EDITOR

We enjoy spreading community news especially in these strange times. We love to hear from all our readers of both the online and printed versions. Send in your stories to editor@shire.org.uk. Although, if requested, we will not print the name of a letter written to the Editor, we cannot accept an anonymous letter.

Many thanks.



CRICKET CLUB PHOTO UPDATE



Dear Editor,

In response to the photograph of Shirehampton Cricket Club on page 5 of the August edition of Shire, we are grateful to Mrs Mollie Thorborn for adding some information. She believes the Truancy Officer was a Mr Crook but doesn't have a first name, and the boy standing to the left of the man on the far right (Ken Perry) is her husband, David Thorborn. Two other readers have come forward to confirm Mr Crook was the Truancy Officer featured in the photo. He apparently lived on the Portway, and one reader remembers him calling at the house because her brother had been playing truant.

Judy Helme

MANY THANKS

Dear Editor,

A big thank you to all friends and neighbours for your lovely cards and good wishes on the occasion of my birthday. It helped to make the day even more memorable.

Bobbie Perkins

HAVE YOUR SAY

Dear Editor,

We note there has been a recent application for a "Lawful Development Certificate for an existing use of the former Wessex Water Sludge Loading Quay, for the purposes of the storage and restoration of boats and other craft, and related ancillary activities."

Many folks who walk up and down the Yellow Brick Road have their own strong views on the activities of the occupiers, as do our group, as part of the nature reserve was taken over by them a couple of years ago, unlawfully, in our view.

If you wish to comment on the application, it's available on the Bristol City Council Planning Portal, reference number 20/03817/CE, or search by postcode BS11 9XA. The deadline for comments is 16th October 2020.

Friends of Lamplighters Marsh

JUST PASSING THROUGH!

Dear Editor,

I wonder who else has smiled when this little one arrived in their garden over the last period? Many thanks to whoever had this idea and started passing it round - and to whoever passed it to me. Naturally he has moved on and I hope has cheered many more people!

Kind regards,

Lyn Morton



AND ALL I ASK IS A TALL SHIP AND A STAR TO STEER HER BY...

Dear Editor,

I was thrilled to see this when I was by the Lamplighters this morning.

I believe it's a cargo ship.

Thought you may like to see it!

Val Lloyd



©Val Lloyd



Hello there! **Would you like to improve your well-being?**

I am a local Shire resident and a Personal Trainer who can help you to achieve your goals without the need to attend a gym.

Whatever your age or ability I can help:

- Improve health and fitness level
- Improve muscle tone and bone density
- Improve mobility and coordination

Strongfirst Kettlebell Instructor.

Specialist wellness coach for perimenopausal and beyond females.

Individual programme to suit you, your goals and your level of fitness. Hope to see you soon!

Linda x x

Weekly classes - just come along - no need to book:

- **Kettlebells are Monday 5.15 - 6.15pm and 6.30 - 7.30pm, Wednesday from 5.15 - 6.15pm and Thursday from 6.30 - 7.30pm at the Cotswold Community Centre. Message for 1:1 technique session.**
- **Bootcamps: Monday and Wednesday 6.15-7.00am. Please message for details.**



SHIRE STRONG



For a free initial consultation in your own home or mine. Telephone: **07875 054 292**

Email: l.linda1206@gmail.com

www.shirestrong.co.uk



KING WILLIAM IV (AKA THE KING BILLY)

SEVERN ROAD • HALLEN
BRISTOL • BS10 7RZ

Restaurant Opening Times:

Tuesday to Saturday Noon - 3pm & 6pm - 9pm
Sunday Lunch 1pm - 4pm
Closed Sunday Evening & All Day Monday

Home Cooked Food

Vegetarian & Vegan Options Available

Sports Bar

Open All Week from Midday - 11.30pm
Sunday 11pm Close

Advanced Booking Recommended for Restaurant
0117 229 9914

FRONT GARDEN TRAIL IN SEA MILLS AND COOMBE DINGLE

This year there will not be the annual flower and craft show in Sea Mills. Disappointing for many but this has not phased the “Sea Mills and Coombe Dingle Come Together Group” as they quickly organised the “Front Garden Trail” for 18th July.



©Kathryn Courtney



©Kathryn Courtney

There were 26 gardens to view in one day and some spectacular gardens to see. Not just flowers and shrubs but also herbs, vegetables and fruits were thriving. There was plenty of interest and it was also a social occasion for many chatting about gardens.

Kathryn Courtney.

Shirehampton Osteopathic & Sports Injury Clinic

Providing Safe, Effective, Professional Treatment for All Your Aches, Pains, Sprains & Strains Since 1995

Jonathan Nichols D.O.

Appointments Telephone : 0117 9293289

www.osteopathbristol.com

24 Shirehampton High Street, Bristol, BS11 0DL



0117 9823210 paul@woodfamilybutchers.com 0779 2998829

Update from Darren Jones, MP

This Autumn will be so important in determining the future health of our high streets and neighbourhoods. I'm pushing hard to ensure Shirehampton, and other communities in Bristol, have the tools and support needed to succeed in our post-coronavirus economy.

In Bristol, we are fortunate to have a diverse range of essential workers and services that have banded together to keep us safe during this pandemic. Over the Summer, I met with frontline workers from emergency services through to food distribution and local businesses owners too. This included dropping in on the **fire service** and the **ASDA distribution centre** in Avonmouth as well as **Ruby Jeans** in Shire to catch up with the owner, Mark, about how they adapted their business to help people self-isolating with supplies. I also had the honour of nominating more of our excellent NHS staff in Bristol for the **2020 NHS Parliament awards**. I know that Shire has an active climate change group too, which is great. I officially launched the national **Citizens Assembly** on reaching net zero in Parliament and look forward to speaking with residents about this as soon as we can.

In September, I met with the **Shirehampton Neighbourhood Group** to catch up about their ambitions for Shirehampton and ensure they are fully briefed on the Government's proposal to deregulate planning laws affecting our high

streets and residential areas. The impact of the pandemic on small businesses, alongside planning law changes and the review of business rates poses both challenges and opportunities for our high streets and I'm keen to make sure we get the best out of all of it for our local community! I've also been working to connect local businesses with tech platforms, including Google, Facebook and Microsoft, so that small and medium enterprises across our constituency have the tools to adapt and thrive in on the digital and physical high street.

There's still time to give feedback to my **Annual Parliamentary Survey**. Every year I ask for your feedback to check whether we can improve the services I provide to you with my small but dedicated team of staff. If you have a moment to share your thoughts with me, I'd greatly appreciate it. Simply go to: www.surveymonkey.co.uk/r/mpsurvey1920

In October, I'll be resuming my **Powered by You Street Stalls** in high streets across our constituency to get your perspective on this issue. I'm excited to kick this off in Shirehampton, at my usual spot outside of the **Co-op** on **October 17th from 12:30pm**.



©Darren Jones

As always, if you have any questions, need support or advice, or would like to book a surgery meeting, please get in touch on darren.jones.mp@parliament.uk or call the office on 0117 959 6545.

Thank you as always, Darren Jones MP

CONTACTING YOUR LOCAL COUNCILLOR
Shirehampton is in the Avonmouth and Lawrence Weston Ward

Your Councillors are:
Donald Alexander – Labour: cldr.donald.alexander@bristol.gov.uk
Matthew Melias – Conservative: cldr.matthew.melias@bristol.gov.uk
Jo Sergeant – Labour: cldr.jo.sergeant@bristol.gov.uk
Conservative Members' Services Office: 0117 922 2746
Labour Members' Services Office: 0117 922 3827

CONTACTING YOUR MEMBER OF PARLIAMENT
Shirehampton is in the Bristol North West Constituency
Darren Jones
Phone: 01179596545 • Email: darren.jones.mp@parliament.uk
Website: www.darren-jones.co.uk

CALL OUR LOCAL TEAM...
...AND BE PART OF THE SUCCESS.

CALL FOR A FREE VALUATION TODAY.

GOODMAN
& LILLEY

THE INDEPENDENT SALES, LETTINGS & LAND AGENTS

rightmove Zoopla

9 High Street
Shirehampton
Bristol, BS11 0DT

Sales - 0117 2130333 • Lettings - 0117 2990101
shire@goodmanlilley.co.uk • lettings@goodmanlilley.co.uk



Teresa Cox



Adam Lenik



Jess Duncan

MW
Funeral
Directors

18 High Street
Westbury on Trym

0117 950 4100

Funerals from £1,995
Cremation costs included

www.mwfuneraldirectors.com



LOCAL HEROES

On Sunday 6th September just after 4pm a serious road traffic accident happened at the junction of The Portway and Groveleaze, Shirehampton. Two local men Richard Parton and Alan Rivers raced to the scene to help. Two other men who were travelling along The Portway at the time stopped to help rescue the badly injured driver and his dog. Emergency services were quick to the scene and the crashed car was badly damaged by fire. At the time of going to print the male car driver remains in critical condition.

“All I heard was a loud bang and as I looked out the window I saw a cloud of smoke. A car was actually embedded into the lamp post. I came out straight away and there was a small fire by the front drivers wheel. My concern was to get the guy out of the car before the fire took hold. Richard and I wrenched the door open and the driver slumped to the side. There was a dog in there which we managed to get out first as it was clambering over the driver. Two other people joined us as the driver wasn't a small guy. We got him out before the car went up in flames. The front of the car, everything just melted. The guy was still alive, still groaning and the paramedics were soon on the scene to treat him”.

“At the time, all I thought about was getting the guy out of the car. It was a quick reaction. This accident happened outside my house. I couldn't sit back and watch things escalate. I had to do something to help save a life. I don't see myself as a hero. I hope someone would do the same thing for me if I was in a car accident. You just do it. I'm not a hero, that was my good deed of the day

done. I haven't heard anything since but I hope the driver survived.” said Alan

“My mother had just come home and knocked on the door with all the shopping. As I opened the door I saw the car hit the lamp-post. I just ran down the street to help. I saw Alan coming out of his house and we both ran down to the car and wrenched the car door open. Two other men joined us to help. It was then we noticed a dog was inside trying to escape and his chain was wrapped around everywhere. I managed to unclip the chain from the collar and grabbed the dog untying

the chain at the same time. This then allowed everybody else to get the man out of the car to safety.”

“At first the dog was fine, she was a lovely dog and I took her back home with me to look after for a short while. She was obviously in shock due to the high speed impact and later she started to limp. A Police Officer took the dog to a vet in Bradley Stoke but I haven't heard anything since. Like Alan says, I'm not a hero. It's common sense really. It was about saving lives and that's what we did” said Richard

Kathryn Courtney



©Kathryn Courtney

Witnesses Sought to Collision on Portway, Bristol

Posted at 08:15 on 7th September 2020

We're appealing for witnesses and information after a collision which closed the Portway in Bristol just after 4pm on Sunday 6th September.



©Kathryn Courtney

A blue Citroen Xsara was in collision with a red Mitsubishi Outlander before hitting a lamp post and catching fire.

The driver of the Citroen, pulled from the vehicle by members of the public, is believed to be a man in his 50s. He went to hospital where he remains with injuries initially assessed as potentially life-threatening.

The road was closed for police officers, fire and ambulance crew to deal with the incident, while the lamp post was made safe, vehicles recovered and the road surface cleared. The outbound carriageway reopened at 8.40pm and the road was fully reopened by 9.30pm.

If you saw the collision or the vehicles in the moments beforehand, or have any dashcam or other information which could help the investigation, call 101 quoting reference 5220202339.

Should I Wear A Face Covering?

A face mask or face covering such as a scarf, bandana, religious garment or hand-made cloth covering has now become part of lives and part of law. Each must securely fit round the side of the face and safely cover the nose and mouth, confirmed sources of transmission of virus by droplets from coughs, sneezes and speaking.

England, Northern Ireland, Scotland and Wales each have their own rules so double check the guidelines for each of the countries if you are planning to travel.

With the six people rule coming into force on the 14th September due to the rise in coronavirus cases it is very important that each of us do our best to prevent the spread of the virus. Washing our hands on a regular basis, socially distance where we can and wearing our masks or face coverings.

Every day situations we may find ourselves in we should be wearing masks on public transport, shops, shopping centres/malls, indoor markets, places providing personal and beauty care, banks, post offices, legal or financial premises, veterinary services, visitor attractions, entertainment venues, funeral service providers, libraries, community centres, youth centres, social clubs, public areas in hotels, youth hostels, hospitals, health centres, and places of worship. People are also advised to wear face masks in care homes and places where social distancing is not possible.

Face coverings are not required in restaurants with table service, bars and pubs. If other indoor premises have a café or seating area for you to eat and drink, then you can remove your face covering in this area only. You must put a face covering back on once you leave your seating area.

Whilst some people may continue working from home, others have made a return to the work place. Employers must make sure that the risk assessment for their business addresses, the risks of Covid-19 using the Department for Business, Energy and Industrial Strategy guidance to inform decisions and control measures including close proximity

working. Employers will advise with regards to use of face masks in the work place.

There are exemptions for not wearing a face mask and these include children under the age of 11 years old, physical or mental illness or impairment, or disability. This includes autism, lung conditions, anxiety, speech, visual and hearing impairments. So if you see someone not wearing a mask they may have an invisible disability. However the web site for Hidden Disabilities are using a sunflower icon on lanyards, cards, posters and more to raise awareness and also provide visible ways as to why a person is not wearing a mask. This saves

embarrassment should a person be challenged. The web site link is: www.hiddendisabilitiesstore.com The Government covid-19 web page is also providing exemption cards to print off too.

The police can enforce the law if members of the public do not comply with wearing a mask or without a valid exemption. Public transport operators can deny access to their services if a passenger is not wearing a face covering, or direct them to wear one or leave a service. Fines start from £100 and repeat offenders will continue to be fined up to £3200 if they fail to wear a face covering.

For more information about face coverings please go to: www.gov.uk/government/publications/face-coverings-when-to-wear-one-and-how-to-make-your-own/face-coverings-when-to-wear-one-and-how-to-make-your-own

Kathryn Courtney



BRUNEL
INDEPENDENT
FUNERAL DIRECTORS

Brunel Independent Funeral Directors
3 Concorde Drive
Westbury on Trym
Bristol
BS10 6PZ

0117 374 2002
admin@brunelfd.co.uk

Louise Constable
Partner

Chris Wilshire
Partner

Pre-paid Funeral Plans
Direct Cremations from £1495
Simple Funeral Services from £1950
Home Visits
24 Hour Service

Nan's Pantry
Freshly prepared, homecooked
Buffets
for Business and Private Functions
Cooked to order with FREE local delivery
Tel: 0117 9829008
[email nanspantry@hotmail.co.uk](mailto:nanspantry@hotmail.co.uk)
www.nanspantry.co.uk



The Storystop
CAROLYN WEST,
INDEPENDENT USBORNE
CONSULTANT
*For all of your children and young
adult books delivered to your door.*
Free books and discounts for hosts.

Please visit my website:
org.usbornebooksathome.co.uk/carolynw/
Email: carolynwest1@outlook.com



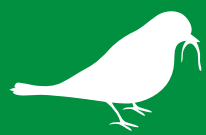
81
PENHILL

PENHILL RESIDENTIAL HOME

Home from home...

Set in Shirehampton, our family-run residential home offers unparalleled personal care to elderly ladies and gentlemen.

For more information, please visit www.penhill.com or call us on 0117 982 2685 to arrange a visit.



The Elephant in the Room



Shirehampton Climate Emergency Group

Thank you to Simon Holliday for the use of his photographs.

You may have been aware of the Climate actions taking place around the country in early September. There were a number of events here in Bristol over the Bank Holiday weekend leading up to the mass demonstrations at Westminster as Parliament opened. The protestors were there to demand MPs' support for the Climate and Ecological Emergency Bill.

"The Climate and Ecological Emergency Bill was introduced... by the Green party MP Caroline Lucas with the support of cross-party MPs. Drafted by scientists, academics and lawyers, it will – if backed all the way by MPs – strengthen the Climate Change Act and ensure that Britain has a comprehensive strategy to reduce greenhouse gas emissions and restore our natural world."

(Guardian, 03/09/2020)



©Simon Holliday



©Simon Holliday

The Bill calls for the UK to make and enact a serious plan to deal with our real fair share of greenhouse emissions so that we don't go over critical global rises in temperature. It demands that we take action for the protection and conservation of nature here and overseas along supply chains, recognising the damage we cause through the goods we consume. And it insists that those in power do not carry on polluting as usual, imagining they can depend on technology to save the day. Finally it provides for ordinary people to have a real say on the way forward in a citizens' assembly.

Climate Change is the Elephant in the Room.

We have been completely occupied recently with Covid-19, but Climate Change poses far greater threats than the virus. There is only so much we as individuals can do to make the "rapid, far-reaching and unprecedented changes in all aspects of society" the UN warns are necessary if we are to keep below a temperature increase of 1.5 degrees centigrade. The Climate and Emergency Bill will make it the legal duty of government to reduce greenhouse gas emissions and protect and restore the environment we all depend on.

We can all help by writing to our MPs and ministers demanding they support the Bill.

Renée Slater



©Simon Holliday



© Bob Pitchford

Mud Larking and Treasure Mapping



TANDEM ARTS

Despite all the difficulties, looking ahead and trying to make plans, Tandem Arts is preparing a couple of safe and free activities for this year's Big Draw Festival. (www.thebigdraw.org) Please make a note of the following dates during half term:

Friday 23rd October

Mark making and free drawing using ink made from river mud (small group of adults by prior arrangement)

Saturday 24th October

Treasure mapping family bubble (from 11am)

Saturday 31st October

Treasure mapping Family bubble (from 11am)

The Lamplighter's pub has kindly agreed to allow us to use their outdoor log cabins for the events: every other cabin can be used for a family bubble to draw a map, using a total of three cabins at any given time. Ideas, instructions and materials are provided but most of all, you are encouraged to have fun and use your imagination.

The organisers will make sure the activity is conducted in a Covid secure way and will be supervising it throughout, whilst observing Social distancing.



©The Lamplighter's Public House

Bookings will be taken in advance and will be on a first come first served basis. A session for adults involving drawing and mark making with mud from the river will take place on Friday 23rd.

Follow Tandem Arts on www.facebook.com/theportwayroom for up to date information or email tandemarts2@gmail.com if you would like to book a place now.

Nature Notes

I hope you can just make out a little bit of this spider's artwork! The web is initially supported by a delicate looking, but very strong silk thread which was started at the top corner of our conservatory, and connected to the bottom edge which is attached to our large fuschia bush, which sits in a half barrel on the grass.



©Bobbie Perkins

It's been there for several days, so means we have to remember not to take a short cut onto the lawn!

It has been very quiet here since Autumn arrived, although the squirrels are busy storing up for winter, judging by neighbours reports, which is good, and the hedgehogs are still around, some in daylight hours, so we will be putting out extra supplies for them to fatten up on.

Jeff spotted a jay on the riverbank a few days back, which I sadly missed. And I did spot a buzzard soaring recently, after quite a time without a sighting.

My gold finches don't let me down I am glad to say. We have quite a number feeding on the Niger seed every day, and many of them still in baby feathers, so I wonder if there have been extra broods due to the good weather. Hope so!

This year has been a difficult time for everyone, but I like to think nature has continued pretty much as normal, and it has obviously helped a lot of people have something to focus on, and enjoy more than they might have once had time for.

Happy nature watching all,

Bobbie Perkins



❤️ #ThatFeeling

that Slimming World *feeling back on it!*

Contact Kelly, your friendly local Consultant to book your place in a real-life group today...

**We're Back
Shirehampton Group**

THURSDAYS AND SATURDAYS

Limited availability per session

To reserve your space contact Kelly on 07751 846308

Churches in the Shirehampton Area

Shirehampton Baptist Church News



Season of mists and mellow fruitfulness, Ode to Autumn by John Keats describes this beautiful season when the leaves change colour, the weather is cooler and the crops sown in Spring and Summer are harvested. Thanksgiving celebrations are both worldwide and very ancient. Our Harvest services reminds us of all the good things God gives us but encourages us to share with others who are not so fortunate.

At Shirehampton Baptist Church our **Harvest Service on September 27th will take place in the church building at 11am**. Gifts of dried food and tins will be brought and later distributed to the **North Bristol Foodbank**. On other weeks we will continue on **Zoom at 11am** and at the **Church at 4:30pm every Sunday**.

Our church building is open every Thursday morning from 10am to 12pm and we welcome anyone who wishes to come and pray in private or to talk or pray with our minister or others there to help. All being well we will resume our **monthly meetings on October 11th at 4:45pm in the**

Cotswold Community Hall, Dursley Road. We will start a series on the Lord's Prayer with the help of a video and some discussion.

We have lived through many months of uncertainty yet the seasons continue to come in their order. There is a lovely verse in Genesis chapter 8, verse 22, the first book in the Bible when God promises Noah after the flood. "As long as the earth remains, seedtime and harvest, cold and heat, Summer and Winter, day and night will never cease".

A message of hope from a faithful God.

Greetings from all at Shire Baptist, Station Road

Hello from Shire Methodist

www.shiremethodist.org • www.facebook.com/shiremethodist

September marked the beginning of a new year for the Methodist Church. We were delighted to welcome back Revd Patrick Stonehewer to lead our worship in physical rather than virtual form, in our church building. Many of our church family and friends are continuing to worship from home and we are still keeping in touch with each other by phone, letter, email and WhatsApp. One of our members continues to play hymn requests on her piano down the phone line to others, some of whom are housebound due to their health situation. Many of our members have been experiencing health challenges and we have been holding them in prayer.

We are pleased to welcome back **Weight Watchers** and the **Shire Newspaper Team** to our building. We are also delighted to welcome **Slimming World** to use our premises, while their usual location is not in use. Every group using the building has completed a thorough COVID-19 risk assessment so that we can keep our community as safe as possible.

In recent years, we have wanted to ensure our church building and church family is supporting our local community: following Jesus's example of looking after people's physical needs as well as their spiritual needs. Our vision is coming together and we are delighted that we are now helping to:

- Care for our **environment** through registering with the Eco Church Award Scheme
- Care for people's **bodies** via Weight Watchers and Slimming World
- Care for people's **social connections** through supporting the Shire Newspaper Team
- Care for people's **spiritual needs** through our Christian faith.

There are many more opportunities that we are exploring to support caring for our community's financial and educational situation, and caring for people's emotional challenges too.



Our Morning Worship is held on most Sundays at 11am in our church building. Please contact us to check if it is going ahead to avoid disappointment. Revd Patrick Stonehewer also shares weekly reflections that can be accessed via his YouTube channel.

May God's peace be with you all during October.

Everyone at Shire Methodist

St Mary's News

Hi Folks!

Welcome to this October newsletter from St Mary's Church. I cannot believe that at the end of this month we shall once again be putting our clocks back to Greenwich Mean Time, which we were already in when the Coronavirus pandemic started throughout the Globe. The nights are rapidly drawing in and the word "Christmas" has already started to appear in some of the shops - the worst of all is I shall be another year older on Christmas Day!

The first piece of news is that St Mary's is to have the services of a **new Curate for 12 months or so. He is the Revd Simon Leighton**, who has already been ordained Priest and is in the third year of his Curacy having initially trained at Trinity College, Stoke Bishop. Simon has a wife called Joanna and two young children - Jeremy who is two and a half years and Jessa who is 10 months old. We welcome Simon and his family to St Mary's where he will no doubt be an asset to our community.

On Sunday, 20th September, St Mary's also welcomed **3 new Students into our midst - Lizzy, Kizzy and Martha**, together with their families. So if you see The Revd Simon and the 3 students around the Parish, please make yourselves known to them.

This year our **Harvest Festival will be at 10.30 am on Sunday, 4th October**. It will be somewhat different to previous years because of the Pandemic.

This year our Appeal is for non-perishable items of food - either in tins or packets. This food will be distributed to our **Local Food Bank** to assist those in need. Sadly, it may not be possible to display a Harvest Loaf this year as our local bakers - Redland Bakery - went into liquidation earlier in the year. The Loaf is normally in the shape of a sheaf of corn with a little Field Mouse at the bottom. This could be the first time we have been without a Harvest Loaf since the end of World War II, when bread was in short supply. Whether we shall find another baker in the future to make our Harvest Loaf remains to be seen.

We have a couple of changes to our Sunday services to announce.

Firstly, **Kids Klub has resumed in September**, following easing of the pandemic rules. Along with this new start post-lockdown and new changes to Sunday mornings, we thought a new name



should be part of the change too. This will now be called our **'Rise and Shine' Service**, since we rise for breakfast and shine for Jesus. The service is held each **Sunday morning from 8.30 am until 9.30am**. Please let us know in advance if you are going to attend this service so that we can make the necessary preparations and ensure social distancing is observed.

Another change is that our Sunday morning service will now commence at 10.30am instead of 10.00am. This will give more time between both services to clean and to set up for our **Holy Communion Service** and to avoid congestion whilst people leave one service and arrive for the next.

Well, that's all the news for this month, other than this quote - People are funny; they want the front seat of the 'bus, the middle of the road, and the back of the church!!

Bye for now. C.M.E.

Severn

FOOT CARE PRACTITIONERS

Friendly and professional foot care in the comfort & safety of your own home.

Most common foot complaints:

- + callus and corns
- + ingrown nails
- + diabetic foot care
- + fungal nail
- + nail cutting
- + verrucae

£5 OFF

New patient consultation & treatment, with this voucher, usually £35

Expires 31 November 2020

Contact Holly at Severn Foot Care:

W: www.severnfootcare.com

E: info@severnfootcare.com

T: 0117 2510 226

*Enhanced DBS certificate, medical emergency certificate, Qualified Foot Health Practitioner, Level 4 diploma in Foot Health, trained at The SMAE Institute, fully insured.

THE SMAE INSTITUTE

Beau's Bouquet's

Tel: 0117 334 3007

Flowers Designed With Your Thoughts in Mind

Valentines Day, Weddings, Anniversaries

Birthdays, Funerals & more!

www.beausbouquets.co.uk

FREE DELIVERY

DEB'S MOBILE HAIRDRESSER

For a friendly, professional, reliable service at competitive rates

Call Deb on 07984013370

Den's Party Balloons

Balloons for all occasions

Birthdays, Christenings, Weddings, Anniversaries etc

Mobile: 07572 364 333

Answer machine: 0117 904 2876

Email: denys@sky.com
FB: Den's Party Balloons

SHIRE MARKET UPDATE: Shirehampton Markets will be Back on Spring 2021

Since the end of March 2020 our lives have changed dramatically with the Coronavirus. Lock down, restrictions and the gradual re-introduction of shops, pubs, restaurants, hair dressers, barbers, in fact everything we have taken for granted, including schools, are now re-opening with many guidelines in place to enable this to happen. Washing hands regularly, social distancing, hand sanitisers, face masks, face shields and gloves in some cases are now part of our life, but the experience of each re-opened business has changed.

Shirehampton Markets has liaised with our market traders, volunteers, venues management, St. Nicholas Markets and we've each been approached by people on the High Street who have said they are looking forward to our markets and events returning to our communities once again. We have gone through the Government Guidelines thoroughly in order to make sure we all remain protected and safe from the Coronavirus the best we can.

Both venues we use – the **Tithe Barn** and the **Public Hall** – offer indoor and outdoor space and like any other community building are re-opening with limited use.



After discussions and doing a health and safety review we have made the decision to re-open our markets and events early Spring 2021. The remaining High Street Markets and our Christmas Market are suspended until next year, but never fear we will be returning brighter than ever for all our local communities of the four villages to enjoy once again.

We want to keep our market traders, volunteers, market management and you, our customers safe. The uncertainty of the Coronavirus is another factor and although we have been sorely tempted to reopen our markets this year, we don't want a start/stop situation which would cause confusion having to cancel at short notice. Three of our traders won't be returning to any markets at all until next year, (but we could get cover for those stalls). With many of the goods being sold at the markets people like to pick items up, clothes need to be tried on as well as jewellery and adjusted to size. With guidelines in place this would not be possible. We can't open our market cafe for refreshments and cake, food being sold on the premises would have to be take-away thus destroying the community aspect to meet up for a cuppa or lunch as we cannot provide tables and chairs for use and ensure social distancing.



We would only be able to let so many people into the market venue at any one time and this would become a clinical way to shop, following a one-way system. We'd also hate to think that the markets could play a part in spreading the virus through no fault of our own having followed guidelines. The conclusion, all this would destroy the ambience, atmosphere and community spirit of our markets at this time.

We will be running an online 'High Street Market' on a weekly basis from September with our traders at www.facebook.com/shirehamptonmarkets

If you don't have access to a computer ask a friend or family member to help you with this. We have a couple new projects in the pipeline too for everyone in our communities to enjoy next year. We will have plenty to look forward to in 2021.

We hope you understand why we reached our decision and we do realise how important our markets are to each and everyone of you. We are disappointed too as we love running our events for all to share. In the meantime, we look forward to seeing you 'online' and of course seeing each of you in person in Spring 2021. **Stay safe everyone.**

Kind Regards.

Ash Bearman, Katherine Birth, Kathryn Courtney.

Shirehampton Markets Management.

Should We Become a Cashless Society?

This year it has become more apparent that we are heading for a cashless society in the future due to challenges faced with the Coronavirus. Many of us are doing online shopping and using credit or debit cards as payment. Even ordering take-aways for home delivery directly from a shop or via an app such as 'Just Eat' requires a card payment. There is no such thing as snack money or dinner money any longer for school children. Money is uploaded to a prepayment card to make payment easier in school, but should we become a cashless society?

As well as using credit and debit cards, some use digital currencies such as bit coin, others make payment via PayPal and Apple Pay for example, you can even use your smart phone to make payments and of course there are advantages to using these methods instead of using cash. They include reduction in money laundering, tax evasion, financing illegal activities, theft such as burglary or even muggings as 'carrying cash' is on the decline. Using your card is safe, quick and easy to use especially when making contactless payments. You can check your balance via digital banking and keep a note of your transactions made at any time of day, especially useful with the reduction of cash machines on the High Street. When travelling internationally currency exchange

is easier. Using cash is likely to spread germs when handling it so why not switch to using your card and have done with it?

The disadvantages of not using cash include, all your card transactions are traceable and accountable, you could be open to a small risk of having your card cloned or your details hacked online resulting in your bank account being emptied or technical issues could stop you using your card for payments. You'll need access to cash then. We've seen the news regarding such issues but banks are quick off the mark to resolve many of these cases. Some people may find it hard to control their spending when not seeing cash in their hands. Others may have low income and then have the inability to manage budgets. Some people might not have bank

accounts, are not technologically savvy or are pensioners who have to stick to a budget and want to see cash in their hand. There is also the danger of getting yourself into debt without realising until it's too late. And what about pocket money for children? Cash is important for them to learn the value of money. You can't really do that with a card can you? In the future we may be charged by banks and financial business for using our cards to spend our own money! Now there's a thought.

A cashless society isn't new. In fact centuries ago bartering was the first form of a cashless society. However we are interested in how you have managed during the pandemic lock down? What are your views? Do you still use cash or have you been using your cards more? Has the 'cashless society' been a hindrance or a godsend or has it made life difficult for you? **You can drop in a letter for the Shire Newspaper into the local Shirehampton Post Office or email editor@shire.org.uk by 10th October.** We will print as many responses as we can in a further article about the subject.

Kathryn Courtney

CHICO THE DEMON BARBER

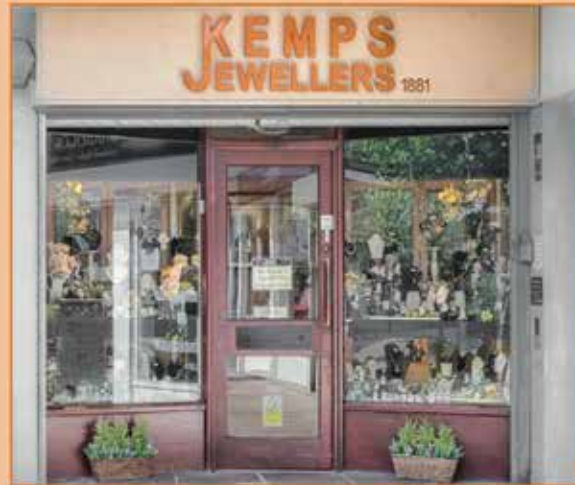


**CHICO'S BARBER SHOP
22, HIGH ST, SHIREHAMPTON**

KEMPS JEWELLERS

9 CARLTON COURT, WESTBURY ON TRYM, BS9 3DF

Tel: 0117 950 5090



*Rings and jewellery,
new and second-hand.
With a great range of modern
second-hand jewellery to
complement our exciting
selection of beautiful traditional
second-hand pieces.*

**website address:
www.kempsjewellers.com**

RE-STARTING 9th SEPTEMBER

OVER 70's EXERCISE CLASS

Led by qualified Physiotherapist with over 30 years of experience

Come and join us for a fun, inclusive class

At: Shirehampton Public Hall, BS11 9TX
On: Wednesdays at 2.00pm until 3.00pm

Cost: £4.00

Targeting:
 Strength
 Mobility
 Balance

Contact:
Sarah Bradley
0117 9070680
or just turn up!

sarahexerciseclass@hotmail.com

MADE YOU LOOK!
ADVERTISE YOUR BUSINESS HERE
FROM JUST
£6.80 PER MONTH!

\$ELL 'UR' \$TUFF

The Easy Way On Ebay

- 1** Choose the items you want to sell
- 2** We take care of everything! (collection, photos)
- 3** You Get a Cheque in the Post

For details contact Christine 0117 9829576
email: sell-ur-stuff@hotmail.co.uk

\$U\$ It Out For Extra Cash

BCM
FUNERAL SERVICES

*The home of
 fair price funerals*

A complete funeral from

£2360*

Price includes:

- A standard cremation service
- A traditional elm veneer coffin
- All appropriate third-party fees



177 Crow Lane, Henbury, Bristol, BS10 7DR
 Telephone: 0117 950 8066
 Website: www.bcm-funerals.co.uk
 Email: admin@bcm-funerals.co.uk

*Conditions apply

YOUR LOCAL EXPERTS adverts@shire.org.uk

BLINDS

SIMPLY BLINDS

For Verticals, Venetians, Roller Blinds at easily affordable prices

Grab a Bargain in Vertical Blinds

Large selection of imported fabrics
www.simplyblinds.org.uk

0117 3706142

BUILDERS



www.eyesbuilding.co.uk eyesbuilding@gmail.com
07825 184130 or **0117 336 0794**

- Extensions / Newbuilds
- Refurbishments
- Brick Work / Block Work
- Patios / Garden Walls
- Plastering / Rendering
- Damp Proofing
- Drylining
- Maintenance

CARPENTERS

RICHARD CHILCOTT CARPENTER

- Laminate Floors • Doors
- Skirting Boards • Dado Rails etc ...

Telephone: 0117 985 8347

Mobile: 07952 763 630
FOR FREE QUOTE

ELECTRICIANS



Your Local NICEIC Approved Contractor's
Commercial & Domestic

FOR A PROFESSIONAL, RELIABLE, LOCAL SERVICE
"Where you the Customer comes First"

- Full / Part Rewires
- Consumer Unit Upgrades
- Earthing Upgrades
- Garden Lighting
- Showers
- Landlord Safety Checks / PAT
- Electrical Condition Reports (EICR)
- Fault Finding / Repairs
- Security Alarms
- Emergency Lighting
- Fire / Smoke Alarms
- Networking
- CCTV
- Appliance Repairs

PART P REGISTERED
Certificated & Guaranteed Work
Fully Insured



For a Free Quotation
Contact Paul



07799 050947
0117 9821979

FENCING

A M FENCING

All types of fencing supplied and erected

- Discounts for OAPs •

For a free quotation ring Mark on

0117 968 4359 or
07977 429899

www.amfencing.net

GARDEN BUILDINGS

D&R Garden Buildings

For all your garden building needs

Sheds, summerhouses, greenhouses, car ports, mobility scooter sheds, shelters, decking, hot tub shelters, play equipment, animal shelters

Prices include delivery and assembly in Bristol.

For more information visit:

www.dandrgardenbuildings.co.uk

GARDEN MAINTENANCE



RHS qualified
Free estimates

Get ready for summer with

GardenWorks

all your garden needs

Do you need a helping hand in your garden? I am a local, experienced and trusted gardener

- regular garden maintenance
- grass cutting
- garden clearance
- leaf clearance and tidy
- pruning & hedge cutting
- planting
- redesigning garden areas

For competitive rates and a reliable, friendly, high quality service contact Conrad

Tel **0117 9828023** or **0788 2288968**

BARLOWS

Lawn Cutting from only £7.00
Hedge Cutting from only £10.00

Artificial Grass Installer
Landscaping
No Job Too Small!
Free Quote - No Obligation!

Call:
07534 703 092

GAS SERVICES

FRANKLIN'S GAS SERVICES



511036

BOILER INSTALLERS AND HEATING ENGINEERS
YOUR LOCAL GAS SERVICE ENGINEER
NO CALL OUT CHARGES

COMPETITIVE RATES
FULLY QUALIFIED ENGINEER

- BOILER INSTALLATIONS
- HEATING BREAKDOWNS

BOILER SERVICES AND REPAIRS
- LANDLORD SAFETY TESTING AND GAS AND PAT

- GAS LEAKS COMMERCIAL AND DOMESTIC

07841870939

GATES

DOMESTIC GATES + INDUSTRIAL GATES
RAILINGS + BALASTRAS + SECURITY GRILLS

GATES PLUS

01454 632905

07887 986894

www.gatesplus.co.uk

"Victoria", Ableton Lane, Severn Beach, BS35 4PR

HOUSE EXTENSIONS



Kingfisher
DESIGN SERVICES

30 Years of Computer Aided Design

Need a House Extension ?

We can provide a complete design service for all your planning needs

Drawings produced for full planning, permitted development, building regs, pricing & construction

Free Initial Consultation

Call Chris on 07972 764939

kingfisherdesignservices@gmail.com

**ADVERTISING YOUR LOCAL BUSINESS IN YOUR LOCAL PAPER
IN YOUR LOCAL EXPERTS SECTION IS EASY**

Contact **07580 776199** or adverts@shire.org.uk for More Information

KITCHENS

Need a New Kitchen

We provide Professional kitchen installation

Using qualified Tradesmen Guaranteed

If you're serious about getting

a quality fitted kitchen

at a competitive price

We also cater for budget kitchens

Competitive quotes

Contact Mike

07973687129

From someone who knows what he's doing!

LOCKSMITHS

D&D Locksmiths & Key Cutting

Over 15 years experience

*** Professional * Reliable * Honest * Friendly**

- Commercial and Domestic Properties • 24 hour Emergency Service
- Non Destructive Entry • UPVC/Aluminium Door Specialists
- Garage Door Lock Upgrades • Safe Opening and Servicing
- Manual and Electronic Digital Locks • Security Boarding Up
- Very Competitive Prices • Insurance Compliance Upgrades

8 Coaley Road,

Shirehampton, Bristol BS11 9XD

Office: Tel 0117 3827568

Mobile 07557 022466

email: danddlocksmiths@hotmail.co.uk

PLASTERING

RICH WEAVER PLASTERING

Qualified Plasterer - Competitive Rates

From a small patch up to a full property, you'll get a quality, friendly and reliable service not to mention a clean work area when I've finished!

For info, availability or to arrange a quote please call: 07855 244862

email: rockrichweaver@yahoo.co.uk

PAINTING AND DECORATING

FINISHING TOUCH DECORATING SERVICES

Quality workmanship with over

30 years experience

Please contact

Shaun Crowley on

Telephone: 0117 907 1902

Mobile: 07917692802

For a FREE estimate

R. B. Painting Services

PAINTING AND DECORATING MAINTENANCE

INTERNAL AND EXTERNAL WORK

Tel: 01454 632486

Mobile: 07890 411653

**Fir Tree House, Shaymoor Lane
Pilning, Bristol**

**Advertise Your Business Here in
Your Local Experts Pages
for as Little as £6.80 Per Month**

Telephone: 07580 776199

or Email: adverts@shire.org.uk

Plaster Master

Tel: 0117 914 7090 Mob: 07791 049 995

- General Builders
- Home Improvements
- Qualified Tradesmen
- Extensions
- Waterproofing
- Rendering
- Plastering
- Brick Laying



M^cCALL PLASTERING EST 1976

- OVER 30 YEARS EXPERIENCE
- INTERIOR & EXTERIOR
- QUALITY WORK
- COMPETITIVE RATES

Call: 07970 596 260

or 07909 937 229

dannymccall2323@hotmail.co.uk

PROPERTY MAINTENANCE

ROB'S PROPERTY MAINTENANCE



**For all those jobs that
still need doing...
I'm here to help!**

**Building & Property Maintenance
Plastering • Rendering • Handyman
Decorating • Tiling • Plumbing
Fascia/Guttering • Bathrooms
Gardening/Fencing • Sash windows**

ROB: 07891 450 047

robspropertymaintenance@yahoo.com



Property Maintenance

**Your one stop shop for all your
House & Garden
Requirements**

Grass Cutting	Landscaping	Plastering
Hedge Trimming	Fencing	Flatpack Assembly
Tree Felling/Trimming	Pathways	Gutter Fit/Clean
Patios; Decking	Pressure Cleaning	Metal Handrail
Driveways	Painting & Decorating	Fabrication

FULLY INSURED WITH OVER 30 YEARS EXPERIENCE
Too many to list - call to discuss your personal needs

Tel: 0117 9043839

mob: 07973 691518

info@kandepropertymaintenance.co.uk

MOTORING



All makes and models catered for - Specialists in



- Diagnostics
- MOT repairs
- Servicing
- Tyres
- Cambelts
- Clutch's
- Brakes
- Exhausts



Call today 0117 9829043 or visit www.LNmotors.co.uk
Unit 4 St Brendans Trading Estate, Avonmouth Way West, Bristol, BS11 9EH

PRICE Bros.Ltd

Auto Engineering

Bristol's Leading Engine Reconditioners...

- GENERAL REPAIRS
- EXHAUSTS & BRAKES
- AIR CONDITIONING SPECIALISTS
- DE GAS RE-GAS & REPAIRS

We are very large stockists of engine components for cars & Commercial engines

CALL 0117 982 1064

Fax: 0117 982 3700 · Portview Road, Avonmouth, Bristol BS11 9LD
www.pricebrosengineering.co.uk

PLUMBING AND HEATING



BATHROOM, SHOWER & PLUMBING SPECIALIST

- Complete bathroom refurbishment
- Ceramic tiling
- Heating & general plumbing services
- Clean & tidy workmanship
- Competitive rates



"Always on tap"

Call Darren on 07901 910361

Find Panache Plumbing on Facebook & FreeIndex
www.panacheplumbing.co.uk

Smythe Plumbing & Heating Services

All aspects of plumbing & heating work undertaken
Free quotations & professional advice

Sam Smythe
Tel: 07766 050140
smythe-plumbingservices@hotmail.com



EDMOND PLUMBING

Friendly, Reliable Qualified Plumber

- ◆ Boilers and heating
- ◆ Replacement taps
- ◆ Electric and mixer showers
- ◆ All household plumbing requirements
- ◆ Bathroom, kitchen, shower room tiling
- ◆ All jobs guaranteed

NO CALL OUT CHARGE

Ring Ed on 07791 798544

ARE YOU READING THIS AD?

SO COULD YOUR FUTURE CUSTOMERS!

Advertise your business here from as little as £6.80 per month!

A. AYLWIN

28 Years Experience

PLUMBING AND HEATING SERVICES

TEL: 07462 915355

Covering Bristol & the South West

107 Bradley Crescent
Shirehampton
Bristol
BS11 9SS

maggsaylwin@gmail.com

ROOFING

SPECIALIST ROOFING

Trusted local builder

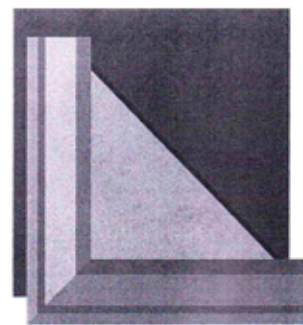
- ◆ Roof specialist
- ◆ House extension
- ◆ House renovation
- ◆ Driveways
- ◆ All jobs guaranteed

For a quick and efficient job look no further

NO CALL OUT CHARGE

Contact us on 07791 798544 or 07449 922001

WINDOWS



Avonmouth Windows

Repairs and replacements.

Your local expert. For a free quote call

07968 804126

www.Avonmouthwindows.co.uk

SCAFFOLDING



CLARIDGE & CO.
SCAFFOLDING

AFFORDABLE | RELIABLE | LOCAL

07494031470 | CLARIDGESCAFFOLDING@GMAIL.COM

THE WINDOW DOCTORS Ltd

Misty Windows
Broken Handles
Damaged Hinges
Broken Locks
Door Repairs

ALL REPAIRS UNDERTAKEN - No Job Too Small
"A friendly and reliable service."

For a Free, no-obligation quote please contact us on:

www.win-doc.com
 0117 982 2870
thewindowdoctorsltd@gmail.com

Servicing Bristol & surrounding areas

SPORT IN SHIREHAMPTON



City and Port of Bristol Bowling Club

Before completing the story of Club Summer Tours there is good news about bowling this season. Almost twenty bowlers have now been to the green to bowl in accordance with Covid 19 regulations. Some have bowled every week since it became possible to do so. There is also a mini-pairs competition which will run until the end of the season. Bowling is very much alive at the City and Port of Bristol Club.

The final part of the **Club Summer Tour** starts in **Sandown, I.O.W. at the Trouville Hotel in 2018**. The tour started with a long delay when the coach coming from the Isle-of-Wight suffered damage on the ferry coming to the mainland and it had to be replaced. After a long wait the replacement coach arrived. The delay was such that arrival at the hotel was just in time for the evening meal.

After that all went very well. The hotel was situated almost on the beach which made life easy for those early morning swimmers like **George and Julie** plus a few more as the week progressed.

A very good weeks bowling and plenty to see and do on the island including the chance to ride on the I.O.W. Railway from Shanklin to Ryde. It was quite an experience ex-London Underground rolling stock that rocked as well as rolled as it sped towards Ryde.

At the end of the week there was a nobly knees contest suggested by new tourist **Shirley Callaghan** and supported by the majority of tourists. It was great fun. This was the second visit to Sandown - the first was in 2008.

In **2009** the destination was **Paignton** where one game was within walking distance of the hotel. A feature of this week was a ride on the steam railway and a boat trip from Kingswear to Dartmouth, a very enjoyable day out on your day off from bowling.

In **2013 and 2014** **The Manor House in Exmouth** was home for the week and the chance to enjoy the nearby beach and sea views as well as great bowling not far away.

In **2005 Ilfracombe** was the destination and in **2012 a return to Newquay** for the first time in many years.

The Royal York and Faulkner Hotel in Sidmouth was the destination in 2019. This was the final tour organised by **Lis Davies**. After being involved in arranging fourteen tours Lis had decided to retire and was thanked by the touring party for all her work over the years. It was a very good tour with visits during the week to one of the oldest clubs in Devon at Budleigh Salterton, the biggest club in Devon - Madeira in Exmouth and the club with the finest green in Devon at Ottery St. Mary.

So that's the tour story so far.



All aboard the ferry to the Isle of Wight - Summer 2018



This year's tour fell victim to Covid 19 but is now re-scheduled to take place at the **Langham Hotel, Eastbourne in 2021**.

For information about the club and its activities please call David Hinksman on 0117 9082713.

House of Dobey

Domestic & Commercial Laundry Services

WASH, DRY & IRON

Shirts £2.50
Trousers £2.50
T-Shirts £2.00
Bedding from £2.50
Pillow cases £0.80 each
Curtains from £15.00

WASH & DRY

Overalls & work wear from £2.00
Hi Vis Coats £6.00
Sports kits from £12.50
Throws from £12.50
Blankets from £8.50
Duvets from £12.00
Pillows from £6.00

IRON ONLY

Shirts £1.75
Trousers £1.75
T-Shirts £1.50
Bedding from £1.75
Pillow cases £0.70 each

SERVICE WASHES

from £12
(wash, dry and fold)

DRYING ONLY

from £3.20

Collection and delivery service (FREE in the BS11 area)

70-72 Portview Road, Avonmouth, Bristol BS11 9JF

Tel: 0117 982 2555 Email: houseofdobey@btconnect.com

Agents for DRY CLEANING • SERVICE WASHES • IRONING SERVICES • OVERALLS & WORK WEAR • SPORTS KITS

**ADVERTISE YOUR BUSINESS FROM
AS LITTLE AS £6.80 PER MONTH!**

Family Announcements

Do you want to announce a family celebration, marriage or death?

Contact adverts@shire.org.uk to book.

Small text box = £10.

Larger picture box = £15.

Andrew Pinn OPTOMETRIST

- Eye Examinations • Spectacles
- Contact Lenses

Complete Professional Eye-Care

Andrew Pinn Bsc MCOptom
Optometrist

12 High Street
Shirehampton

0117 9822269



Lawyers For Your Business and Family

We can help with:

- Residential Property Sales and Purchases
 - Commercial Property Sales and Purchases
 - Divorce and Family Disputes
- Business and Company Transactions
 - Wills Trusts and Probate
 - Powers of Attorney
 - Commercial Contracts and Trademark Law
- Mediation and Dispute Resolution
 - Civil and Commercial Litigation
 - Employment Issues
 - Road Transport
- Caring for Others/the Elderly

Telephone us now on: **0117 923 5562**

**AMD Solicitors,
2 Station Road,
Shirehampton,
Bristol, BS11 9TT
www.amdsolicitors.com**



ADVERTISE YOUR BUSINESS FROM AS LITTLE AS £6.80 PER MONTH!

SHIRE ADVICE SERVICE

Free Advice Sessions

*Shirehampton Health Centre, Pembroke Road,
Shirehampton*

Tuesdays 10-12 noon

To make an appointment call 0117 9515751

LEE HILL PARTNERSHIP

The Complete Accountancy Service at the Best Price Available



*Friendly professional advice
Accountancy, taxation, Limited company formation, Self employment registration, advice, accounts, Payroll, VAT, book-keeping*

INITIAL DISCUSSION - NO CHARGE

We can visit you if you prefer

0117-949 7700

OFFICE 3, REAR MEWS, 24-26 STATION ROAD, SHIREHAMPTON, BRISTOL BS11 9T

Please visit our website: lhpaccountants.co.uk

Reg Clarke & the 191

Memories of REG CLARKE and the 191 by Gil Osman

Reg Clarke was a big burly man, a war-time merchant seaman. Harry Grainger, the youth club leader and ex-docker, was of similar build, but both men were of an essentially gentle nature underneath. Reg bore the scars (literally) of his time at sea during the war, which were revealed at scout camp when he took his shirt off, for his back was badly scarred, where he had been scalded by burning oil after his ship was torpedoed by a German U-boat.

Reg was a member of the Clarke family of Bradley Crescent, but, when he married, he moved to Sea Mills. He had two sons: Alan and Andrew. Alan became a school caretaker and Andrew a teacher like his father. Reg's wife, Betty, was a charming woman.

Reg Clarke was the third and last of a trio of local men (Mr. Knapp, Harry Grainger and Reg) who had a great influence on me during my formative years.

and the Peewits (this last name was changed to the Ravens after complaints by the Peewits that they were teased by the other scouts because of the name!).

The 19st Bristol (St. Mary's) Scout Group was a church-affiliated group, which involved attending the annual church parade, marching to the War memorial and back for a service. We were expected to be at our smartest. Later, as senior scouts, we observed an all-night vigil at the church as part of our training.

As a teenager I did not belong to any group or gang as did my twin brother, Ron, who was a Teddy-Boy, so I would have been an isolated adolescent, had it not been for the scouts. The 191 provided me with lots of friends and a sense of camaraderie and belonging. All this I experienced once again, later on, when I served my two years National Service in the RAMC (Royal Army Medical Corps).

Joining the 191

When I left Shirehampton Junior School and went to Portway Secondary School, I found that most of my friends belonged to the 191st Bristol Scout Group - so I joined, too! At that time the cub pack was run by Bob Clarke (Reg's younger brother), the scout troop by Reg Clarke and the Rover troop by Charlie Ford. In the scout troop there were four patrols: the Eagles, the Lions, the Otters

CHOICE CARPETS

Free measuring and quotation service and samples to your home

Carpets from £6.99 sqmt for bleach cleanable manmade £11.99 sqmt for wool mix and cushion vinyl from £8.99 sqmt



Luxury vinyl tiles and planks samples and also laminate flooring samples in our showroom

**We are always happy to help with your budget and rely on feedback and recommendation
Quality and professional fitting team on hand with most flooring fitted within days from ordering**

Check out our website www.choice-carpets.co.uk for info, opening times and gallery

01179 826988