

Shire

Your local community newspaper
with news and views from the
Shirehampton area

No. 625 - February 2024 www.shire.org.uk 5,000 copies monthly

Have you got a job that needs doing? Go to YOUR LOCAL TRADESPEOPLE section on pages 21-22 to find a local business who can help.

**First
Shire Market
of 2024
- Thursday
1st February**

Carols on the Green

Christmas Eve 2023 was a wet miserable day, the ground was soggy and hardly an inviting scenario to attract our usual crowd to sing carols, but the indomitable spirit of local residents (and those from beyond Shire) could not be quashed. We had a lovely crowd determined to belt out the old favourites, and to add a bit of musical expertise with descants to two of the carols.

So, a huge thank you on behalf of Shire paper to the Bristol West Concert band for turning up in the rain, Lyn Morton for leading us through with humour and enthusiasm, and Colin Chidgey for



setting up the staging and electrics as he has done for many years. Above all, thank you to all you carollers who keep this local tradition going well into its third decade.

JH

More photos on pages 12-13.

Pembroke Road Garage

A friendly, family-run business offering:

- MOTs & free retests • Servicing
- Repairs & Diagnostics
- Tyres • Aircon Servicing



All makes of cars,
motorcycles

and light commercial vehicles
Free estimates • Courtesy vehicles

**Pembroke Road,
Shirehampton BS11 9SB**

Tel: 0117 982 7396

Mob: 07798898721

 [@rubyjeanscoffee](https://www.facebook.com/rubyjeanscoffee)

RUBY JEANS
— THE PARADE —
Book now for Mother's Day
Sunday Roast on the 10th March 2024

3-4 The Parade, Shirehampton
WWW.RUBYJEANS.CO.UK
0117 9898 224

 [@rubyjeanscoffee](https://www.instagram.com/rubyjeanscoffee)

Shire

Official address: The Library, Public Hall, Station Road, Shirehampton, Bristol BS11 9TU.

Please note the Shirehampton Librarian
Telephone number is: 0117 903 8570

'SHIRE' Contact Details

adverts@shire.org.uk 07742 804737

treasurer@shire.org.uk

Requests for SHIRE by Post 0117 904 3037

distribution@shire.org.uk 0117 982 0478

Internet address www.shire.org.uk

Submit articles editor@shire.org.uk

Advertising adverts@shire.org.uk

ADMINISTRATIVE COUNCIL

Mrs R. Slater, Chairman

Mrs J. Helme, Secretary

Mr Ed Amphlett, Treasurer

Mr. Paul McMillan, Acting Advertising Manager

Mrs. Marilyn Gorry, Archivist

Mrs. Bobbie Perkins, Distribution

Mrs. L. Bradley, Website Manager

Editors: Mrs Fiona Grinham, Mrs Jill Williamson,

Mrs. Sarah Matthews, Mrs. Lucy Bradley,

Mrs. Jackie Hares, Ms. Vanessa Evans

Artwork: Iain Chaffey of Crimson Goose Design

Photographers: Kathryn Courtney, Bob Pitchford

N.B. To meet the deadline with our typesetters, all written copy should be submitted by email or to the Library by the **10th of the month** before it appears in print, or it may not be included in the next edition. **While advertisements in this paper are accepted in good faith, readers are advised to make their own enquiries and assessment.** We request that all adverts are supplied in the correct format and size or there may be a charge should you require artwork to be created. Price on application. Unless otherwise stated, all material appearing in SHIRE is the copyright of SHIRE Publications. Please ensure photographs submitted with articles are cleared for use and permission sought especially when featuring individuals including children. The Shire cannot accept responsibility if photos are published in error where permission for use has been not sought. The views and opinions expressed in these articles are those of the individual authors and do not necessarily reflect the official policy or position of Shire. All information correct at time of going to press to the best of Shire's knowledge.

EDITORIAL POLICY

We welcome contributions for publication in 'SHIRE' but reserve the right to edit any copy received. Articles should not exceed 500 words. Any material published is at the editor's discretion and may also be included on our website www.shire.org.uk unless the copy is clearly marked 'not to be included on the world wide web'.

Contributions submitted to: editor@shire.org.uk

For our current privacy policy visit our website at www.shire.org.uk/privacy_policy

ADVERTISERS!

Contact: adverts@shire.org.uk

Telephone: 07742 804737



SHIREHAMPTON PUBLIC HALL

Station Road, near shops

**HALL, LARGE AND SMALL
MEETING ROOMS FOR HIRE**

For availability and bookings contact

The Hall Manager 0117 982 9963

www.shirepubhall.org.uk

REGULAR EVENTS IN SHIREHAMPTON

Events in our library



Every Tuesday afternoon 3pm – 5pm

Shire's Living Room –

Free soup & bread/tea/coffee/biscuits/board games and a friendly chat.

1st Wednesday of the month 6pm – 7pm

IT Literacy Class –

If you have a Smartphone, iPad, Tablet, or Laptop, but aren't sure how to use it, come along, we're help you!! We're now playing Board Games too!!

1st Wednesday of the month 7:30pm – 9pm

Record Appreciation Club –

Using analogue equipment, we play a classic vinyl album every month and have a discussion afterwards.

2nd Thursday of the month 6pm – 8pm

Family History Group –

We have a team of experts at hand to help you navigate the Ancestry.com website and other online tools and find out more about your family's history.

If you'd like to attend any of the above sessions, either email friendsofshire@gmail.com or phone/text 07943-401575



Cotswold Community Association
Dursley Road, Shirehampton,
Bristol, BS11 9XH
Registered charity no. 1101427
Website: cotswoldcommunity.org
Email: cotswoldca@gmail.com
Phone: 07943-401575

REGULAR EVENTS

MONDAY

Pilates 9.30-10.30am

Kettlebells 5:15-6:15pm
6:30-7:30pm

TUESDAY

Film Night 7:30pm
(1st & 3rd of month)

WEDNESDAY

Keep Fit 10:30-11:30am

Kettlebells 5:15-6:15pm
Pilates 6:30-7:30pm

THURSDAY

Bingo 2pm

Kettlebells 5:15-6:15pm
6:30-7:30pm

SATURDAY

Table Tennis 8pm

Coffee Morning 10am-11:30am
(2nd of month)

Bingo 7:30pm

SUNDAY

Soul Space 5pm-7pm
(1st & 3rd of month)

Cotswold Christian

Community Service 4:45-6pm
(2nd of month)

Come along and join in the fun

For more details and regular updates, join our mail list by emailing cotswoldca@gmail.com

SHIREHAMPTON PUBLIC HALL REGULAR WEEKLY ACTIVITIES

DAY	ACTIVITY	TIME	LOCATION
MONDAY	Twyford Art Club (except August) Yoga	10am - 12noon	Hall
		6pm - 7:30pm	Hall
TUESDAY	Music with Mummy (term time only - pre-book)	10am - 12noon	Bradley Room
	Extraordinary Links Parents Group (every 3rd Tuesday)	10am - 12noon	Hall
	Line Dancing	2pm - 3pm	Hall
	Puppy Training	6:30pm - 8:30pm	Hall
WEDNESDAY	Bristol Healing Rooms (every 2nd Wednesday)	11am - 1:30pm	Hall
	Pop-Up Play Village Bristol North (every 3rd Wednesday - pre-book)	9:30am - 10:30pm	Hall
	Over 75s Exercise Class	2pm - 3pm	Hall
	Extraordinary Links	3.30pm - 5:30pm	Hall
	Shire Stitchers (every 3rd Wednesday)	7:30pm - 9:30pm	Hall
	Women's Fellowship (every 2nd and 4th Wednesday)	7:30pm - 9:30pm	Hall
THURSDAY	Shirehampton Community Art and Social Group (formerly Sea Mills Art Club) Tai Chi Model Railway Club	10am - 12noon	Hall
		2pm - 3:30pm	Hall
		7pm - 10pm	Club Room
FRIDAY	Shire Stitchers (1st Friday of the month)	10am - 12noon	Bradley Room
	Music with Mummy (term time only - pre-book)	10am - 12noon	Hall
	Shire News (last Friday of the month)	4pm	Hall
	Create to Elevate Youth Group	7pm - 10pm	Penpole
SUNDAY	Church of Grace	11am - 5pm	Hall

The Public Hall is also home to Shirehampton Community Action Forum (SCAF) and Tandem Arts (Portway Room).

SHIRE DOOR TO DOOR SHOPPING TRIPS 2024



PICK UP FROM 9AM UNLESS STATED

**WEDNESDAY 7 FEBRUARY:
THORNBURY**

WEDNESDAY 14 FEBRUARY: YATE



These trips are organized by SCAF especially for Shire residents Aged 60 +

Lawrence Weston Community Transport (LWCT) are providing this door to door service in 2 fully accessible minibuses
COST = FREE!




Booking on a first come first served basis. Please book your own trips, you can book to go on all of them, but no block bookings will be accepted.

**TO BOOK CONTACT LWCT ON
0117 329 4647**

office open from 8.30am



the place for you...

    oceanhome.co.uk

Established 1983

Celebrating 40 years helping
Bristol move home!

40
ocean
est. 1983

The *Shire* Community Pages

Avonmouth Ladies Club

IMPORTANT new information

We will be meeting on the first and third Tuesday of each month at the new time of 2.30 - 4.30pm at Avonmouth Community Centre, (but not in Jan and Feb).

We listen to a variety of speakers, as well as having occasional outings.

Diary of Events - March:

Tue 5th March 2024 - Beetle Drive

Tue 19th March - To be arranged

A warm welcome awaits

For any information – contact Julia on 0117 982 9390.

Portway Boys' School 1945

I have recently seen a school magazine for the above and have extracted all names (mainly pupils and staff members) and noted why they are mentioned. There are familiar 'Shirehampton' surnames. If anyone has family interest, or indeed if any of the pupils are still around, I would be happy to do a search. Just email me on julielhelme@aol.com or put a request in the 'Shire'.

On another note, I am one of several volunteers from the Bristol & Avon Family History Society, transcribing Ham Green Hospital Admission Registers from WW1 and have come across quite a few personnel from the Remount Depot admitted to the hospital, mainly with Measles or Mumps, but also Shirehampton/Avonmouth residents with various ailments. This is an interesting family and social history resource and will be available when transcribing is complete, details will be on the B&A FHS website.

Judy Helme

Let's gather!

Avonmouth and Lawrence Weston Ward Community Meeting - Open to ALL residents

1st February 2024 at 7pm-8.30pm
Avonmouth Community Centre

Meet local councillors, community groups, wellbeing services, and so much more...

Refreshments from 7pm

For further information contact Rachel on

0117 982 7445 or email

avonmouthccamanager@gmail.com



AVONMOUTH
COMMUNITY CENTRE
ASSOCIATION



SHIREHAMPTON COMMUNITY ACTION FORUM (SCAF) SHIRE COMMUNITY LITTER PICKS 2024

Meet at 10.30am at Shire Public Hall, Station Road, BS11 9TU

Pick up equipment & we'll go to different areas of Shire and tidy up for 1-1.5 hours

Thursday 18 January

Thursday 15 February

Thursday 21 March

Saturday 20 April

Thursday 16 May

Thursday 20 June

Thursday 18 July

Saturday 17 August

Thursday 26 September

Thursday 17 October

Thursday 21 November

Thursday 19 December

Please come along and help us clean up Shire! All litter picking kit will be provided

**Contact: Ash Bearman at SCAF on 0117 982 9963
or email ash@shirecaf.org.uk**

**Calling All Schools, Youth Groups
and Sports Clubs in Shire;
We Want To Hear More from You!**

- See page 6 for details

Personal Announcements

Do you wish to announce a personal or family celebration, marriage or death?

To book contact: adverts@shire.org.uk Prices Start from £7.50

Graham John George 28/5/1938 – 3/12/2023



Having lived with Alzheimer's for the past eleven years on the **3rd of December** Graham succumbed peacefully, surrounded by his family to his illness.

Graham was well known in his chosen profession of hairdressing and hair-replacement not only in **Bristol** but also nationally. Through this he made connections with people who helped in charity organisations, one of which was the **Variety Club** that helped children less fortunate to be able to take advantage of the Minibuses taking them to places that would otherwise be inaccessible.

When Graham was unable to continue working due to his worsening condition, in 2016 Graham and his wife **Jocelyn** moved to **Shirehampton** to be nearer their daughter and family. Jocelyn looked after Graham at home with the help of **Mears Carers**, who were excellent, until January 2021 when his care became more intense, and he moved into **Granville Lodge Care Home**.

As a family we would like to express our heartfelt thanks to Granville Lodge for their excellent care, the courteous and dignified way that they cared for Graham, and the humour with which they coped with Graham doing 'his paperwork' in their office and his housekeeping in other residents' rooms. We can never praise you highly enough for your dedication, affection, and support over this period.

Graham's passing at this time of the year was incredibly sad and could have been more stressful if it were not for **Daffodil funeral directors**. We were looked after by **Aimie**, who went above and beyond to ensure that everything would take place before Christmas. The day of the funeral at **St. Bernards Catholic church** on the **18th of December**, was as perfect as a funeral can be. Our thanks and gratitude to **Father Francis** for his compassion and support. With a packed church, we said our final goodbyes to Graham.

Graham you will be remembered and loved forever, your Wife Jocelyn, Son Nick, Daughter Colette. Grandchildren Emma, Alex, Sophia, and Isabelle, Son-in-Law Alex, Daughter-in-law Jane, and devoted friend Judy. X

We especially enjoy spreading community news and we love to hear from all our readers of both the online and printed versions. Please, send in your letters and stories to editor@shire.org.uk. If requested, we will not print the name of a letter written to the Editor, but we cannot accept an anonymous letter.

Many thanks.

CHRISTMAS GOOD DEED

Dear Editor,

I would like to convey my huge thanks to the very kind gentleman in the **white Range Rover** who stopped, parked up on **The Ridge** in Shirehampton and got out in the dark and rain on **Monday, December 18th between 4:30 and 5:00pm** to help me out of the situation I had got myself into. Having driven my powerchair onto a grass verge and retrieved my dog's number 2, I got well and truly stuck trying to get back onto the pavement. The wheels just spun, forwards or backwards with the chair burying itself ever deeper into the mud. I was marooned there for about 25 minutes getting ever wetter until my rescuer came by and responded to my arm waving. Despite the very slippery, muddy situation and a chair which weighs in a little over 200kg with me in it, this person succeeded in hauling me out and would have undoubtedly got muddy himself. You sir are a star, your Christmas spirit, selflessness, and generosity were hugely appreciated, and I just wanted to say a big **THANK YOU**. I hope you had a lovely Christmas.

M. McGrath

THANK YOU, AJ'S CAFÉ

Dear Editor,

I would like to show my appreciation to the cafe in the heart of Shire - **AJ's**.

The staff are so friendly and incredibly helpful, they know just how to make people's drink choice by memory, they help customers with the doors and even wipe seats of disabled bikes if it has been raining!

It's clean, comfortable, not overly priced, and great food!

So, thank you to all the staff: **Caroline, Hazel, Alex, RuRu, John, Lewis, and Eden**.

You do an amazing job! Give them a visit in the new year!

Thankyou

Sally Knowlson

Hello there! **Would you like to improve your well-being?**

I am a local Shire resident and a Personal Trainer who can help you to achieve your goals without the need to attend a gym. Whatever your age or ability I can help:

- Improve health and fitness level
- Improve muscle tone and bone density
- Improve mobility and coordination

Strongfirst Kettlebell Instructor.
Specialist wellness coach for perimenopausal and beyond females.

Individual programme to suit you, your goals and your level of fitness. Hope to see you soon!

Linda x x

Weekly classes - just come along - no need to book:

- **Kettlebells** are Monday 5.15 - 6.15pm and 6.30 - 7.30pm, Wednesday from 5.15 - 6.15pm and Thursday from 6.30 - 7.30pm at the **Cotswold Community Centre. Message for 1:1 technique session.**
- **Bootcamps: Monday and Wednesday 6.15-7.00am. Please message for details.**

SHIRE STRONG

SHIRESTRONG WITH LINDA

STRONGFIRST
CERTIFIED INSTRUCTOR

For a free initial consultation in your own home or mine. Telephone: **07875 054 292**
Email: t.linda1206@gmail.com
www.shirestrong.co.uk

Calling All Schools, Youth Groups and Sports Clubs in Shire; We Want To Hear More from You!

Shire News is about the life of the village. At present, we rely on you to submit articles to us for printing in the paper and we do receive some excellent pieces about your activities, achievements, and adventures. It can be a little patchy though and in some editions we have very little, if anything, relating directly to what our young people are thinking, feeling, or doing. Similarly, sports coverage is hit and miss.



We at **Shire** want to change that and already we have contacted every school and some youth groups to ask if they would like to set up their own panels of **editors drawn from the student group**, or simply to select a nominated “*Shire Contact*” to gather and submit articles and other pieces of interest (artwork, photos, stories for example) on a more regular basis. We are also in the process of

contacting sports clubs, especially those that provide sporting opportunities for our youngsters. We have a photographer who is happy to take photographs for you to include with your submissions, subject of course to the usual permissions and privacy criteria.

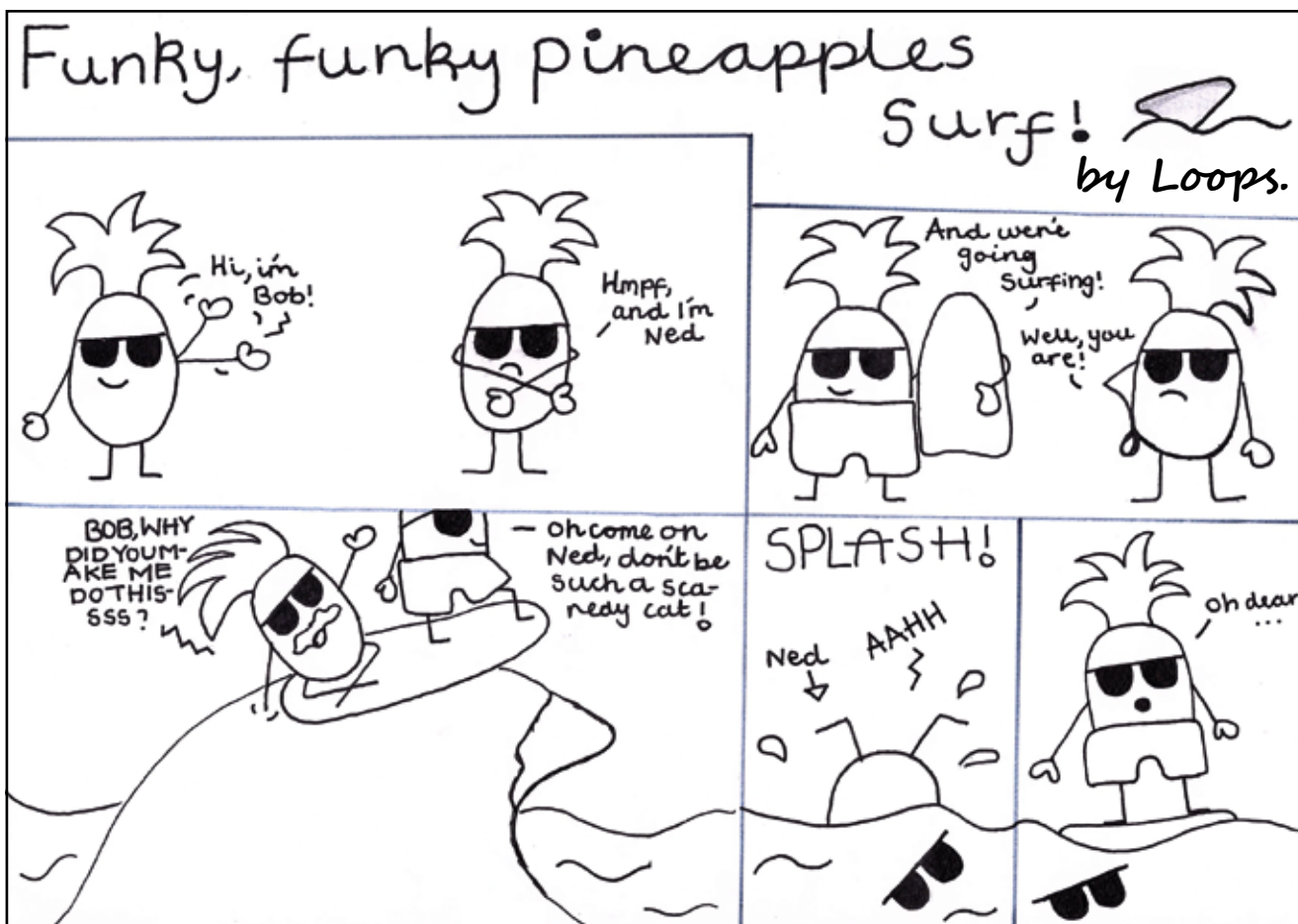
We are also looking to **recruit two volunteer editors**, one to look after and promote youth content and one to work with our sports clubs and groups. The amount of time that you put into these roles will depend on how things develop, but it will always be at your discretion and under your control. The busiest period of the month are the days leading up to the 10th, which is the deadline for submissions, but there is always something that can be done to spread the work more evenly. The Shire committee meets once a month, usually in **Shirehampton Library at 17.30 on the first Monday of the month**; it would be good if you could attend most, if not all, of these meetings. We are a friendly, approachable bunch



and we will endeavour to give you all the support, guidance and help that you need to make a success of and find fulfilment in the role(s).

If you would like to discuss potentially volunteering for either of these roles or if you represent a school, youth group or sports club and are interested in forming closer ties with Shire, please get in touch. I'm looking after the initial setting up the project; you can find my details below. Thanks for getting through to the end of this article and I'm very excited about the prospect of hearing from some of you.

Paul McMillan adverts@shire.org.uk



When I went to the comic workshop in Shirehampton Library, I really enjoyed the freedom of choice that we were given. We were encouraged to let our minds run free and to be creative. I like to draw pineapples and I was able to turn my silly characters into a comic. I thought that the library was a calm place to be and a quiet space to work in.

Lucy Darbo, author and illustrator of Funky, Funky Pineapples.

9 to 5 Ladies' Harmony Chorus



Visitors are welcome at **9 to 5** rehearsals and we are always looking for new members. If you love to sing, especially if you enjoy singing in harmony, come along to a meeting. You can come to rehearsals for free and only start paying a membership fee if you decide to join. We meet on **Tuesdays, 11.00 am to 1.00 pm** at the Port of Bristol Sports and Community Hub, Nibley Road, Shirehampton BS11 9XW.

9 to 5 perform regularly throughout the year in and around Bristol – and as well as performances and rehearsals we make sure we have fun at various social events.

Contacts: Chorus Director Jenny Wood on:
jennybari@blueyonder.co.uk or 0117 3305095


Chairlady: Mary Preece on:
maryprece2000@yahoo.co.uk

Foodbank adLent Calendar

With donations always less after Christmas, Bristol Northwest Foodbank are launching their adLent calendar. Donations can be delivered to their Social Justice Hub at St Andrews Church, Avonmouth, Mon-Fri 10am-4pm.

ADLENT CALENDAR

Please use hashtag #ADLENTCALENDAR to spread the word

14 Feb 1	2	3	4	5	6
Rice	Tinned Meat	UHT Milk	Instant Mash	Men's Deodorant	Custard
7	8	9	10	11	12
Rice pudding	Nappies size 5 and up	Women's deodorant	Instant Coffee	Sponge Pudding	Soup
13	14	15	16	17	18
Jam/Spread	Men's Deodorant	Rice	Custard	Pasta sauce	Tinned Fish
19	20	21	22	23	24
UHT Milk	Pasta	Women's deodorant	Tooth brush	Rice pudding	Tinned meat
25	26	27	28	29	30
Conditioner	Sponge Pudding	Instant Mash	Jam/Spread	Men's Deodorant	Washing up liquid
31	32	33	34	35	36
Rice	Custard	Detergent powder or liquid	UHT Milk	Toothpaste	Nappies size 5 and up
37	38	<p>We are open: Monday - Friday 10am - 4pm</p> <p>Please deliver all the food to our address: Bristol North West Foodbank Social Justice Hub, St. Andrew's Church Avonmouth Road, Avonmouth Bristol, BS11 9EN</p>			
Rice pudding	Instant Coffee				
39	28 Mar 40	<p>0117 9235343 office@bristolnwfoodbank.org.uk www.bristolnorthwestfoodbank.org.uk</p> 			
Instant Mash	Tinned meat				

Bristol North West Foodbank is registered charity No 1147727 Registered in England and Wales

Rose Café

2 The Parade • Shirehampton
Opens 6am
Tel: 07584 851707

Customer Reviews:

Great atmosphere, food is fresh and fantastic quality, service is prompt. (Stuart)

Rose Café just opened in Shirehampton, lush food, nice and clean, friendly and warm. (Louise)




Andrew Pinn OPTOMETRIST

- Eye Examinations • Spectacles
- Contact Lenses

Complete Professional Eye-Care

Andrew Pinn Bsc MCOptom
Optometrist

12 High Street
Shirehampton

0117 9822269

DEB'S MOBILE HAIRDRESSER



For a friendly, professional, reliable service at competitive rates

Call Deb on 07984013370

UNDER NEW MANAGEMENT



West Town Rd, BS11 9NQ 01179829492

- MOT-Free Retest
- Service (All makes)
- Brakes
- Exhaust
- Tyres
- Car Sales

24 Shirehampton High Street, Bristol, BS11 0DL



More than just a Butchers

0117 9823210 paul@woodfamilybutchers.com 0779 2998829

An Update from Darren Jones MP, Bristol North West

www.darren-jones.co.uk | fb.com/darrenjonesmp | [@darrenpjones](https://twitter.com/darrenpjones)

Happy New Year!

A huge thank you to everyone who played their part in sorting the Christmas lights and other Christmas events across the village. Getting the lights repaired, put up and powered is always more expensive than you might think, and yet this year the team went even further with the new 'Merry Christmas Shirehampton' lights being installed for the first time. The money raised from the Shire Santa Dash was once again particularly important. Thanks to all the dashing Santas for their help!

I recently visited my former school, **Oasis Academy Brightstowe** (known as **Portway School** in my days!), to deliver two public speaking masterclasses to classes of Year 10 and Year 11 students.

It was the **music department** when I was at school, alongside **The Grainger Players at Shirehampton Public Hall**, that got me on stage, gaining confidence in performing to an audience. A helpful experience given my day job today!

Of course, there's more to it than simply being prepared to be on the stage – you need to learn the skills to play the musical instrument, too. Similarly, public speaking is partly about being willing to put yourself forward and do it, but you also need to be equipped with the skills to convey a convincing argument and to hold the attention of a captivated audience.

The art of public speaking is an important life skill for all to learn, whether you're a public figure, a public servant or applying for a job or running a business. For too long, though, learning about

public speaking has often been the reserve of the privileged few.

I visit a lot of schools, and I have sometimes noted over the years a stark difference in how confidently students from state and private schools ask a question, or challenge what they have been told.

That's why I started my '*Speak like you own the room*' campaign (darren-jones.co.uk/own-the-room), to head into schools and help our local schoolchildren to find their voices. Since October, I have delivered sessions in six of our state secondary schools in **Bristol North West**, and I should have visited them all by mid-March.

As part of the campaign, I encouraged local schools to consider entering the **English-Speaking Union's ESU-Churchill Public Speaking Competition** – the largest public speaking competition for schools in England and Wales. And it seems a few were up for the challenge!

I've been informed that **Bristol Free School** has entered two teams for the first time, and **St**



© Darren Jones/Houses of Parliament

Bede's Catholic College has put forward two teams as well. Meanwhile, **Blaise High School** is considering entering the competition next year. What a fantastic response!

Furthermore, **Bristol Free School** has the honour of hosting the competition's **Bristol & Bath branch final in February**, thanks to my successful campaign to bring the competition to Bristol North West.

Best of luck to **Bristol Free School** and **St Bede's** for the competition!

As always, if you need my help or have a question, please get in touch on darren.jones.mp@parliament.uk, call the office on 0117 959 6545 or visit www.darren-jones.co.uk. For the latest updates, follow me on social media: fb.com/darrenjonesmp @ [darrenpjones](https://twitter.com/darrenpjones)

CONTACTING YOUR LOCAL COUNCILLOR

Shirehampton is in the Avonmouth and Lawrence Weston Ward

Your Councillors are:

Donald Alexander – Labour: cll.donald.alexander@bristol.gov.uk
John Stephen Geater - Conservative: Cllr.John.Geater@bristol.gov.uk
James Scott - Conservative: Cllr.James.Scott@bristol.gov.uk
Conservative Members' Services Office: 0117 922 2746
Labour Members' Services Office: 0117 922 3827

CONTACTING YOUR MEMBER OF PARLIAMENT

Shirehampton is in the Bristol North West Constituency

Darren Jones Phone: 01179596545
Email: darren.jones.mp@parliament.uk
Website: www.darren-jones.co.uk

THE AERIAL MAN

TV Aerial and Satellite Specialist



Now Offering CCTV and WiFi Installations

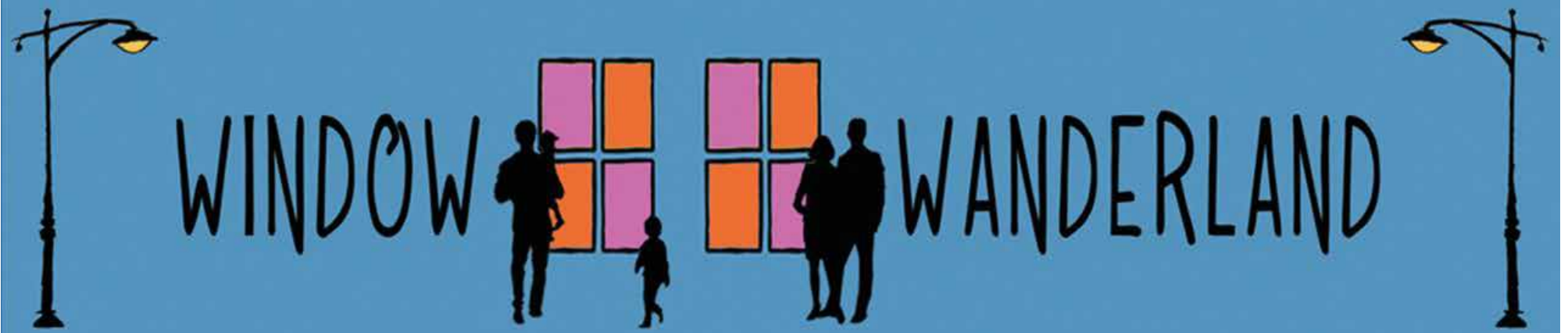
0117 967 9028 | 07818 413 451

www.theaerialman.co.uk

info@theaerialman.co.uk

Affordable Prices - Reliable Service

- Poor Reception Problems Solved
- 2 Year Guarantee
- Digital Aerials
- Additional TV Points
- Humax Recorders
- OAP Discount
- Satellites
- Repairs
- TV Sales



**Shirehampton -
Friday 23rd till Sunday 25th February**

Window Wanderland 2024

Window Wanderland will be taking place in Shirehampton, over the weekend of Friday 23rd until Sunday 25th February 2024. The focus will be on households and neighbourhoods again this year, though we'd welcome any businesses who'd like to put up a display, of course.

We will have access to materials via the **Children's Scrapstore** and can supply some if asked. There will be workshops in the **JTE Hub** at the Methodist Church **every Monday in February** between 3pm and 7pm. There will also be opportunities to attend workshops with **Tandem Arts** at the Cotswold Community Centre on **Friday 16th February** and at the **Public Hall** on **Tuesday 20th February**, both from 3:30pm till 5:30pm, and there will be help with lots of ideas for displays.

For more information, and if you'd like to participate, take a look via this link to the website: www.windowwanderland.com/event/shirehampton-2024 and also on the Facebook page: www.facebook.com/events/729500492040264

There will be lots of information circulating the area via schools and community groups during the next few weeks. If you'd like to display a poster or have some flyers to distribute in your street and get the neighbourhood involved, email: shirewindowwanderland@gmail.com



Many thanks

John Hastings

Churches in the Shirehampton Area

Hello from Shire Methodist Church

www.shiremethodist.org/ • www.facebook.com/shiremethodist/

We hold Morning Worship each Sunday in our church building from 11am. The first Sunday in December is led by a guest preacher, the second is All-Age Worship, the third is Holy Communion led by our minister Revd Martin Slocombe, the fourth is a more informal gathering with coffee and conversation.

Our Hub has many free events which happen in our building on weekdays: films, games, benefits and jobs advice, support groups, and a community fridge, for which we are particularly grateful to the Co-op and local bakery for their contributions. If you shop at the Co-op and have a blue membership card, you can donate money to a local charity every time you shop at no cost to you. Our Hub is a charity which you can nominate. Please ask us if you would like any help with nominating us. We are also grateful to the Quartet Foundation for funding

our Warm Welcome Space again on Mondays and Tuesdays from 3.30pm until 7pm.

If you are unsure where we are located, our building is opposite Boots, on the High Street. The entrance is on Penpole Avenue. There are three doors; the most accessible entrance is the white door a little way up the road. Please ring the doorbell if the door is shut!

Lent starts in mid-February this year. Lent is a time of preparation leading to Easter, like how Advent

prepares us for Christmas. It is often seen as a time of solemnity because we are remembering the lead up to the death and resurrection of Jesus. People often try to give up treats, often after overindulging on pancakes on Shrove Tuesday! This year the Methodist Church's Lent theme is "Unbounded Love: God's love doesn't stay in the lines". This theme is based on the famous hymn "Love Divine, All Loves Excelling", written by Charles Wesley, who lived in Bristol. We will be thinking of the kind of love that cannot be contained, that works in our lives and in our world to free us and heal us. I think we all need a bit of that! More information can be found at www.methodist.org.uk/our-faith/worship/lent-and-easter/unbounded-love/

May God's peace and love be with you all during February.

Everyone at Shire Methodist

Greetings from Shirehampton Baptist Church

Although 2024 is well on its way there is much to report on our Christmas activities. You will have seen Lyn Morton's article about the Christingle Service in December in the January News. This was indeed a special time and a great thank you to Lyn who organised and conducted the Christingle, on behalf of the Cotswold Christian Community.

On December 17th at 6pm families and friends joined us at Shire Baptist for an evening of carols, readings and drama performed by members of Rock Steady club. Extra chairs had to be put out to accommodate the large numbers. This was encouraging, especially to the team of helpers who work hard with the children every week.

On Christmas morning we welcomed visitors from America and London. The service led by our minister Paul Rhodes was enhanced by the presence of a month-old baby reminding us that Jesus entered our world in human form as a newborn child.

In December the Good News Paper was delivered to every house in the village by our team of volunteers.

Now to report our February events: The next Songs of Praise Café opens on Sunday February 11th, 4:45-6pm at the Cotswold Community Hall, Dursley Road. Do join us for an informal time with the Cotswold Community Fellowship. We start with tea and cakes and share some favourite hymns, short talks about various subjects and drama performed by some talented children.

The next Life Café opens on Thursday February 29th in our church building on Station Road, 10:30am - 11:30am. All welcome for warm drinks, delicious cakes, and a chat.

The Rock Steady Club continues to meet every Thursday during term time from 3:30pm to 4:30pm. This club, for primary age children meets in our church building on Station Road for games, music, craft, and drama. They are now rehearsing for their Easter Passion.

A warm welcome awaits at our Sunday morning service held in our building every week at 10:30am. We celebrate Communion on the third Sunday of the month and hold an All Age Service on the fourth Sunday. There is a Zoom Bible Study group at 4:30pm.

We pray for our village and for our world, where there is so much conflict in many countries. We are here to help wherever we can.

Greetings from all at Shire Baptist.

Contacts: 07743 683684 or rhodespaul360@gmail.com

KEMPS JEWELLERS
9 CARLTON COURT, WESTBURY ON TRYM, BS9 3DF
Tel: 0117 950 5090



Rings and jewellery,
new and second-hand.
With a great range of modern
second-hand jewellery to
complement our exciting
selection of beautiful traditional
second-hand pieces.

website address:
www.kempsjewellers.com

BRISTOL HEALING ROOMS are in Shirehampton every second Wednesday of the month.

Don't miss this opportunity to drop in between **11am and 1pm** at the **Shirehampton Public Hall, Station Road**, to be prayed for in the name of Jesus. **AS IT WAS IN THE GOSPELS!** We have many stories of healing on a daily basis.

Jesus heals today as He did during His time on earth.



St Mary's News

Hi Folks!

Well, Christmas and Epiphany are behind us and believe it or not, we are already approaching the church season of Lent which lasts for 40 days ahead of preparing for Palm Sunday, Good Friday, and Easter Day. The light nights are also starting to pull out, which leads me to think of Spring with buds on the trees and flowers and warmer weather!

The **Goldies' singing session is on Wednesday, 7th February at 10.30am.** Come in and recall your younger days with songs from the past, there is sure to be music to appeal to you.

On **Saturday 10th February a new crafting group** will be meeting at St Mary's between **10am and midday.** This is being trialled for 6 months to see what interest there is and will be meeting on the **2nd Saturday of the month.** If there is a craft you have been wanting to find out more about and try, or you are working on a project and need advice, why not pop in, and see if you can find help here? We hope all sorts of crafts will be catered for, from knitting, crochet and sewing through to art, card-making and more.

Tuesday 13th February is Shrove Tuesday, or Pancake Day as it is often known. Traditionally, pancakes were eaten on this day to clear the cupboards of sugars, fats and eggs before the

40-day fasting season of Lent began. We are having a **Pop-Up Pancake Event** on this day between **4 to 6pm** with lots of fun for the family! Children must be accompanied by a responsible adult please. There will be craft, competitions, toys, lots of fun, and plenty of pancakes! Any donations received at this event will go towards the cost of the pancakes - thank you.

Wednesday 14th February is Ash Wednesday, the first day of Lent. There will be a special service at **6.30pm** in St Mary's Shirehampton during which we receive the mark of the cross in ashes on our foreheads as a sign of penitence and mortality. As usual, the Mission Area churches will be holding a **Lent course on Wednesday evenings,** starting after our Ash Wednesday service **through to 20th March.** At the time of writing, we are awaiting confirmation from the Mission Area churches of the dates each one can host, so please look out for



the flyers when they are printed. Each course will have refreshments from **7pm for a 7.30pm start, ending at 9pm.** Flyers can be viewed on our website or picked up in church.

Shirehampton Area Choir rehearsals started on **Tuesday 30th January** and take place each Tuesday evening from **7.30pm.** The choir is to perform the oratorio *'Penitence, Pardon and Peace'* by **J H Maunder** on **Holy Saturday, 30th March** here at St Mary's. If you are interested in joining us, please come along as we would welcome new members - no voice audition is needed, but if you have some knowledge of music, this would be an advantage to you.

This month I am going to ask you - "What did the bus driver put on his morning pancake? Answer: Traffic jam"!!!

Bye for now! C.M.E.



Elite Beds

AND MATTRESSES DIRECT



Unit 1, 23 Salisbury Street, Amesbury SP4 7AW

01980 874242

Unit 9 Wyevale Garden Centre, Bath Road, Thatcham RG10 3AN

01635 897665

1 and 2 Windsor Drive, Devizes SN10 2TH

01380 887943

The Wendy House, 3 Farrell Close, Cirencester GL7 1HW

01285 897426

62/64 High Street, Shirehampton BS11 0DJ

0117 233 8777

www.elitebedsandmattressesdirect.co.uk



MILLBROOK BEDS
HANDMADE ENGLISH BEDS SINCE 1840



DORMEO
Mattresses and Pillows Rejuvenated

MLILY

HYPNOS
THE MOST COMFORTABLE BED IN THE WORLD



Carols on the Green

Continued from page 1.

All photos taken by and © Bob Pitchford.





SUPPORT YOUR LOCAL HIGH STREET:

Goodman & Lilley Estate Agents

For the last six years Goodman & Lilley have been part of Shirehampton's High Street and Adam Lenik has lived in Shirehampton for over 7 years with his wife and two daughters who attend the local schools.

"I've been working for Goodman & Lilley for over five years and started out as a trainee, learning everything from the property sales process and viewings to the work required to bring a property to the market. It has brought together my passion for property, meeting people and photography. I'm now a **Senior Negotiator** meaning I am also able to provide property valuations." said Adam.

"What I love about my job is that every day is different. We have a meeting at the start of the day reviewing the previous day, providing feedback on viewings to vendors and then we're onto the days work which is anything from property valuations, viewings and sale progression. I like getting to know local people and helping with their property and onward purchase. With photography being one of my passions I take great pride in taking photos of a vendors property and have always tried to list a property as if it was my own."

"The cost of living crisis has had an impact on our business with buyers being more cautious and sellers are more reluctant to put their properties on the market. I really do feel for people when chains collapse or a buyer has missed out on a property they love. I have been in the same position in the past".



© Kathryn Courtney

With Adam living and working locally the subject of the **High Street** is asked. "It is hugely important to support your local High Street, for me it's very much 'use it or lose it'. Not every village has a High Street and it is important to keep the local shops and community, retaining what we have. I miss the greengrocers, another supermarket option would be great. Having our own festival on the High Street, close the road for the day, this would be good for the local business, a great way to meet locals and bring together the community as well."

"I'd really like to see a bit more love for the High Street, resolve the litter issues we have and see less empty shops in the area. Also the speed limit of 20 is plenty" Adam concluded.

Goodman & Lilley can be found at 9 High Street, Shirehampton, Bristol, BS11 0DT
www.goodmanlilley.co.uk Telephone: 0117 2130333

Kabryn Courtney

House of Dobby

Domestic & Commercial Laundry Services

Find us on Facebook

<p>WASH, DRY & IRON</p> <p>Shirts £3.00 Trousers £3.00 T-Shirts £2.50 Bedding from £3.00 Curtains from £20</p> <p>WASH & DRY</p> <p>Overalls & Work Wear from £2.00 Hi-Vis Coat £7.00 Sports Kits from £15.00 Throws from £15.00 Blankets from £10.00 Duvets from £14.50 Pillows from £6.60</p>	<p>IRON ONLY</p> <p>Shirts £2.00 Trousers £2.00 T-Shirts £1.80 Bedding from £2.00 Pillow Cases from £0.90 each</p> <p>SERVICES WASHES</p> <p>From £16.00 (wash, dry and fold)</p> <p>DRY ONLY</p> <p>From £4.00</p>
---	--

Collection and delivery service (FREE in the BS11 area)
 70-72 Portview Road, Avonmouth, Bristol BS11 9JF
 Tel: 0117 982 2555 Email: houseofdobby@btconnect.com

Agents for DRY CLEANING • SERVICE WASHES • IRONING SERVICES • OVERALLS & WORK WEAR • SPORTS KITS

The Lifeboat

Upcoming Events

Tea and coffee available daily.
Freshly made rolls available
Monday to Saturday from 12pm

February

Thurs 1st 8pm - Karaoke
Sat 3rd 7pm - Magic Malka
Sat 10th 8pm - Tom Corneill
Weds 14th 8pm - Open Mic
Sun 18th 6pm - Comedy Show
Tues 20th 7.30pm - Quiz Night
Sun 25th 6pm - Rhiannon Paige
Tues 27th 7.30pm - Bingo

Deals & Offers

Sundays & Mondays Bath Gem £1.90 per pint
Monday - Saturday Fresh crusty cobs £2 each

For more information follow us on Facebook
www.facebook.com/LifeboatPub



**WONDERING WHAT
YOUR PROPERTY
VALUATION WILL BE?
CALL YOUR LOCAL
PROPERTY EXPERTS
AND FIND OUT
TODAY...**

Zoopla rightmove OnTheMarket The Property Consultancy

**GOODMAN
& LILLEY**

9 HIGH STREET,
SHIREHAMPTON,
BRISTOL, BS11 0DT

SALES: 0117 2130333 | LETTINGS 01275 299010

SHIRE@GOODMANLILLEY.CO.UK | LETTINGS@GOODMANLILLEY.CO.UK



R. DAVIES & SON

FUNERAL DIRECTORS

UNATTENDED/DIRECT CREMATION FUNERALS FROM £975

Unattended Funerals Attended Funerals Bristol Funeral

CONTACT US AT:

9 Chessel Street
BEDMINSTER
0117 963 7848

143 Church Road
BISHOPSWORTH
0117 964 1133

The Poplars
HAMBROOK
0117 956 6774

381 Gloucester Road
HORFIELD
0117 942 4039

2 Pembroke Road
SHIREHAMPTON
0117 982 3188

63 Westbury Hill
WESTBURY ON TRYM
0117 962 8954

10 Gilda Parade
WHITCHURCH
01275 833 441

TALK TO US ANYTIME

Whatever your funeral wishes or budget, we can provide a funeral to suit you. Prepaid funeral plans also available.



DIGNITY
FUNERAL DIRECTORS

WWW.RDAVIESFUNERALS.CO.UK

Pricing is correct at time of print and is subject to change.
Price stated is for an Unattended Funeral.



Never doubt that a small group of thoughtful committed individuals can change the world. In fact, it's the only thing that ever has.

Shirehampton is a community that continues to have a special identity, but this does not happen by accident. There are a number of people working tirelessly to ensure that our village continues to be a place that supports the physical and mental wellbeing of its residents. In a changing and challenging world we need to assess and re-assess how we maintain and grow our strength, both as individuals and as a community.



We have recently welcomed **City of Bristol College** into our community, here for the first time. "Bristol's College" has always advocated community education as a vital way to support the needs of Bristol and its local communities and now it has come here. The courses are currently running in the beautiful **Penpole Room in our Public Hall** on Station Road and both of them aim to support us as individuals and as community members.

There are two distinct courses on offer starting in January, both running for ten weeks with sessions lasting three hours, with a break for drinks and a chat in the middle. You can sign up for either or both.

WELLBEING. A friendly encouraging course that focuses on how we are. We all feel a bit "lost" at times, and over the sessions together the course

covers different topics such as identity (how and why we change who we are depending upon circumstances), what messages we send ourselves or "self-talk" as it's known. The interesting part of one session covers what we say to other people when we talk about ourselves and what we listen to. It is for all of us who want to think about how we begin and/or continue to live our lives without the baggage of the past or mind clutter. We face many challenges in our individual and collective life: so how do we develop and grow a mindset that supports us in meeting those challenges?

COMMUNITY MAKERS. This a merry course that encourages anyone who wants to get involved in the community and for those folks already involved to learn different techniques, skills and theories that supports community activities. This is a great course for anyone thinking about jobs that involve working with people and for anyone looking for work with groups and charities. It is for those who want to think about their ambitions and aims, their personal development and wellbeing and their community plans. The session that covers what the "ideal community" looks like was really interesting.

Margaret Mead



The courses are taught by City of Bristol College lecturer Rebecca Lloyd, MA. If you would like to learn more about either or both courses, she can be reached at: Becca.Lloyd@cityofbristol.ac.uk or on 07890518607.

Becca has been working in the community for many years and has created many community events herself. In the sessions there is a lot of discussion and sharing of experiences and stories. Becca is a friendly teacher who has a knack of making you think and challenge yourself in a really interesting way.

Here's a quote from Paul who attended the first course: "I particularly love the start of the sessions, where we share 'Sunshine Moments' from our lives during the previous week; it's always good to start on a positive note"



PENHILL RESIDENTIAL HOME

Home from home...

Set in Shirehampton, our family-run residential home offers unparalleled personal care to elderly ladies and gentlemen.

For more information, please visit www.penhill.com or call us on 0117 982 2685 to arrange a visit.

Aesthetically Pleasing

Nurse prescriber with over 4 years
experience in aesthetics and over 10 years

NHS experience

PROVIDING:
ANTI WRINKLE INJECTIONS
DERMAL FILLERS
SKINBOOSTERS
SKINPEN (MEDICAL MICRONEEDLING)
MEDICAL GRADE FACIALS
ADVANCED BLEMISH REMOVAL
PLATELET RICH FIBRIN
AND MUCH MORE



Contact Ebony on 07896121674
www.apbristol.co.uk
ebonyryan49@gmail.com
We are also on Facebook & Instagram

Christmas Fair at Shirehampton Primary School

On Friday 8th December the Friends of Shirehampton Primary School held their annual Christmas Fair. We were keen to replicate the success of last year's event and provide a fun, festive afternoon for our school community.

With plans to have some stalls outside as well as within the 2 school halls we were all on weather watch for the week leading up to the fair, and thankfully in the end it was kind to us, apart from the one torrential downpour just as the school bell sounded and the fair opened!! The atmosphere was created with lights, decorations and **Create 2 Elevate Youth Group** came along to help ensure that the music was constant and festive.

This year we were fortunate enough to have lots of external stallholders, all from the local community

who came along to sell their beautiful pieces. From crochet animals, resin jewellery and candles to dog accessories and sweets, all went down a storm. Some of the children from **Years 5 and 6** did a fantastic job volunteering their time and running our games, including a snowman tin can toss and hook the bauble from the Christmas tree. A huge thank you to them for their hard work. We also ran our own tombola, toy, and book stalls, as well as a reindeer food station and paint your own Christmas decoration.



© Shirehampton Primary School

This year **Father Christmas** set up his grotto in our brand-new school library, and the children were able to hear him read a story, sing with him and receive an extra special gift, as well as sit in his sleigh.

Our raffle was a huge success with some fantastic prizes donated from businesses and individuals in our local community as well as from further afield.

It was a wonderful event and we hope that everyone who came along had a great time. We were overwhelmed with support from the school community, who donated items to sell, baked for our stalls, helped set up and run the event and came along to enjoy the fair. We would like to say thank you to everyone who supported us, we really, really do appreciate it.

Friends of Shirehampton Primary School.



© Shirehampton Primary School



© Shirehampton Primary School

Twigged It Tree Care



All types of tree work undertaken

Large hedge work

Free, no obligation quotes

Fully qualified

Fully insured

07788665987

twiggeditc@gmail.com

www.twiggedit.co.uk

07742 804737
adverts@shire.org.uk

daffodil[®]
low cost funeral services

0117 982 6100

50 High Street,
Shirehampton,
Bristol, BS11 0DJ

Complete Funeral Services
starting from £1,455.00

includes third party fees

Independent Pre Paid Funeral Plans
also available

Bristol
Funeral Plans
Raising the standards of funeral planning



FPA
FUNERAL
PLANNING
AUTHORITY
REGISTERED

NAFD
Resolve

www.daffodil-funerals.co.uk

Let Our Family Care For Your Family



The Future is Sustainable

Over the holidays during that seemingly endless month of rain I overheard several people at various gatherings talking about sustainability. Two young women after a family dinner were discussing how they could manage with less in 2024. One said, “we’ll live with what we have” and make do, another that she wouldn’t buy anything – ANYTHING – new. (Of course, a few exceptions: knickers, socks.) Others wondered whether they could actually commit to Veganuary – one thing to stop meat for a month, but eggs? Butter? Some older women at a party discussed the clothes they were wearing – how they had always bought a new top for Christmas, but somehow not this year. This top from last year was still in fashion and that one from ten years ago still fit perfectly. And in our family at least, lots of gifts were homemade: delicious cucumber pickle, lino cut pictures, a first ever attempt at crochet which may need finishing touches from our Climate Swap and Repair Cafe.

What really surprised and encouraged me was the way everyone was thinking in such **positive ways about using less**. People seemed to be finding their creativity and feeling empowered by how much they found they could do with relatively little.

The government wants us all to reduce consumption of meat and dairy by 20 per cent (Eggs? Butter?). To reduce emissions consumers must reduce demand. But we can also cut emissions by buying second-

hand clothes, or re-making the clothes we have, recycling more by sharing and swapping, not just clothes but also furniture and appliances. What a transformation it would be if we began to hold large expensive appliances like dish washers and washing machines and freezers communally. It would mean valuing each other for who we are and what we do rather than what we own or what we wear.

Renee Slater



© rawpixel.com Free photo sweet potato falafel recipe idea for vegan: Freepik.com

Nature Recovery in Bristol

National Report Praises Role Bristol Plays in Nature Recovery

A major new report unveiled by UK100 has highlighted actions taken by Bristol City Council as standout examples of the key role that local authorities can play in nature recovery. **Powers in Place: Nature** is a comprehensive overview of the legislation, strategies and guidance that enables councils to protect and enhance wildlife, restore biodiversity, and promote nature recovery. The report shows how local authorities, such as Bristol City Council, are pioneering nature recovery initiatives, despite facing a “dysfunctional” policy and funding environment. The report also underscores the urgent nature crisis in the UK, presenting alarming statistics:

- The UK is one of the most nature-depleted countries in the world, with 99.7% of fens, 97% of species-rich grasslands, 80% of lowland heathlands, up to 70% of ancient woodlands and up to 85% of salt marshes destroyed or degraded
- One in nine children had not visited a park, forest or natural environment in the previous year
- One in five Brits live in areas deprived of green space
- Since the 1970s, 41% of all UK species studied have declined
- While 26% of the UK’s mammals are at risk of extinction

Marvin Rees, Mayor of Bristol said: “We were the first in the country to declare an ecological

emergency.... Through our own work and that with partners, we aim to meet our ambitious target for 30 per cent of Bristol’s land to be managed for nature. Our **One City Plan** and **Ecological Emergency Action Plan** have established agreed, shared actions for the city to take over the next decade and beyond. These include establishing wildlife-friendly food growing areas in every ward, reducing pesticide use by at least 50% since 2020, and embedding practical policies that will commit future developments to building with nature as a principal consideration into the emerging Local Plan. Beyond the city boundaries we are working with neighbours to create a new wetland to the north of the city as part of a wider, strategic flood defence programme across local authority boundaries.



© Bob Pichford

Christopher Hammond, UK100 Chief Executive said: “Councils are the key to the revival of our vital wildlife and green spaces and the interrelated fight against the climate crisis, but they desperately need more support.”

The Powers in Place: Nature report was produced for UK100 by researchers who gathered information from local authorities across England and reviewed legislation, powers and duties relating to the natural environment.

Consistency for Nature: The report calls for clear, coherent and connected policies and financial incentives for nature alongside Net Zero

Priority for Nature: strengthen how nature is protected in planning and across all council services

Funding for Nature: long-term investment in council teams to deliver on nature recovery duties

BCC 16.9.23

Nature Notes

This pigeon had just finished showering, and so you can see how fluffed up his feathers are, I hope! The usual suspects are visiting the back garden frequently, especially at the time of writing up these notes! Jackdaws, feral pigeons, wood pigeons who rely on what the nimbler birds drop on the floor, crows, and happily the blue tits, great tits and a beautiful robin; they all manage to find time and space to visit.



© Bobbie Perkins

This morning, Jan 15th, as I was hanging out the washing, I was thrilled to watch a buzzard taking advantage of a dazzling blue sky and very gentle wind, using the thermals to soar upward and upward above our home without flapping its wings even once! What a glorious sight that was.

There were plovers racing up and down the river at the end of December, which I always love to see. It always makes me think that Spring is indeed only a short time away. I will leave you with that happy thought! Happy nature watching.

Bobbie

After a “Steady As She Goes” Year in 2023, We have High Hopes for Shirehampton Public Hall in 2024

Bristol City Council did an amazing job restoring the hall roof via Ashcroft builders, and Atwills, master stonemasons completed the repair and cleaning of the front face of the building.



Following this, a team of volunteers completely refurbished the old library staff room (now affectionately known as the **Bradley room**), and this has provided the hall with a new decent sized space, resulting in less pressure on the main theatre hall itself.

Howdens in Avonmouth gave us a great deal on the new kitchen, and with the help of the same trusty volunteers, (and some specialists including **Tony Nightingale** on electrics) this is now nearing completion.

Many thanks to **Ed, Gail, Miles and Linsay** who engaged in all the above activities over the last year. Their hard work, dedication and innate sense of fun has been hugely appreciated.

One of the other main tasks last year was applying for and being awarded (we hope) some **Community Resilience Funding** from BCC which will allow us to undertake more ambitious projects at SPH. We are in line to receive £59k from that fund, and even better, **David Thomas** has negotiated 50% matched funding from the **Astley Trust**.

This money will allow us to fulfil the ambitions of the previous Trustees, at least partially, by joining the library to the main toilets, which will also create a “*Green Room*” for musicians, actors and others wanting to make use of the Hall’s wonderful stage.

The Astley Trust money will also allow us to refurbish the main hall itself and restore it to its previous glorious condition. We should also have enough funding to decorate the main entrance hall, which currently looks very tired and dated. The aim is to make this a much more welcoming and inviting area.

So, this looks be a great year ahead for Shirehampton Public Hall, and it would be wonderful if you could join us on that journey. That might be by volunteering for a few hours (please ask **Amanda our hall manager**) or by joining in the lovely groups that SPH already has, or maybe even start a new one?

Wishing everyone a great year this year.

Norman, SPH chair

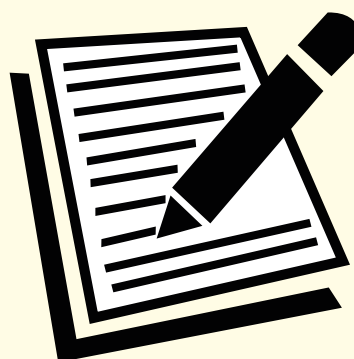
Shire Needs Reporters

Have you recently taken part in a local event you’d like to tell us about?

Is there a local issue you’d like to see more widely discussed?

Or a local story you think should be more widely known?

Why not write a short piece, no more than 500 words, for the Shire. Send your story with your name and contact details to editor@shire.org.uk by the 10th of the month.



Author: All-free-download.com
Creative commons attribution license

Nova Beauty

- Lash Lift
- Gel Application
- Biab Application
- Brow Lamination
- Tinting
- Waxing

Fully insured therapist with over 10 years experience
Friendly, local home salon based in Shirehampton

Facebook Instagram WhatsApp 07958719970



Izabela Rogalska

info@perfectcleanhouse.co.uk
07380 455 009

10 Clayton Street • BS11 9AH • Bristol

The Strange

An original story by Gil Osman

(Previously: the New Chieftain reveals his new plans for the future of the Village - the group of older men who would advise The Chieftain on all village matters, the water system and the Guardians (young hunters). The completion of the new Chieftain's House)

Chapter 15

During the winter months the Stone Age villagers wore a variety of animal skins, furs, and small pelts, but in the hot summer months, adult men and women both, wore grass skirts or kilts. With the onset of puberty and adolescence boys and girls were considered as adult members of the tribe and treated as such; this was when they adopted the kilt or skirt. Prior to puberty children wore no clothing in the summer unless it was particularly cold at night.

Boy and Girl, the deaf/dumb children of The Strange, had now reached puberty and adopted the kilt or skirt as was customary in the village. But they would not wear the coats of animals; they reasoned that it would be like wearing the skins of their animal friends in the secret forest glade (for the same reason they had refused to eat animal food when they were little). However, like their parents and Friend (Little Man), they did not want to leave the sanctuary of the woods to collect hay for clothing and be seen by the villagers, so Friend bartered (secretly) for hay from the villagers in exchange for herbal cures and treatments.

The Strange were ageing rapidly, their infirmity worsening every day and, as concerned parents, they began to talk (using their mutual sign-language) to Girl and Boy and Friend about what should happen after their deaths. Would Boy and Girl move into the home of their parents, The Strange? The twins said that their friends the animals would not visit them if they moved so close to their enemies, the villagers.

It was decided therefore that they would build a new home in their beloved secret glade where the animals and Girl and Boy felt safe. Up until then the twins had only a rough shelter to use in bad weather, for every evening they would return to the house of The Strange to share an evening meal with their parents and Friend and to sleep.

Boy and Girl built their new home in the old style of wattle-and-daub panels and a slanted roof. Although they had seen the new Chieftain's House through their parents' spyholes and marveled at it, they were satisfied with something much more basic and simpler. In the summertime they would hardly use the small house except to sleep in, and then only if the weather was bad, otherwise they would sleep outside in the fresh air, where they could gaze at the night sky and try to count the stars.

The four large panels forming the walls which enclosed the small single room were surmounted by the slanting roof which helped to stop leaks.

Therefore, two of the walls were taller and shorter than the rest to achieve the slant. There was a smoke-hole at the apex and two doors: one opening onto the glade and the other to the back garden. Because there was a shortage of hay in the forest, the twins used fern (of which there was a plentiful supply) as roofing material. Later they would use fern to make their skirts or kilts as it was cooler than hay in the hot summer months.

They planted bramble bushes all around the house, which eventually grew so large that they covered the whole house, acting as camouflage, so that anyone inadvertently discovering the glade would think the house was a huge bramble bush. By this time the back door was the only entrance, masked by wild canes.

At first, the animals watched the building work for a while with curiosity, but soon lost interest and resumed playing with their offspring and feeding, only reacting to Girl and Boy when they took a rest from building work and turned their attention to their animal friends.

When the house was finished the twins looked at the building with pride, for it was the first house that they had ever built.

(to be continued)

Whitney Houston Concert at the Public Hall

On November 30th, I went to see Stacey Charles at the Shirehampton Public Hall in her show **Absolute WHITNEY**, a tribute to the late Whitney Houston. I took my seat in the balcony of this prestigious building, which historically has hosted some truly memorable events, aware that Stacey had some pretty big shoes to fill. 2 bars into her opening song, 'I Have Nothing' from the film *The Bodyguard*, the standard of the evening was set.

It didn't matter that the stage was not bedecked with an expensive set, and the band was merely a pre-recorded, albeit high quality, backing track, she could have been at the Albert Hall for the quality of the performance that she gave. She gave her all. It was a two and a half hour treat of Soul music, for all the fans of Whitney, together with songs by **Tina Turner, Aretha Franklin, Chaka Khan, Steve Winwood, Shania Twain** and many, many more. The audience were rocking, standing, and singing, from the off. Stacey had left plenty of room in front of the stage for people to get up and dance, and she made sure they did by coming

into the audience of the 150 or so and leading people out on to the floor to strut their stuff; and strut they did, some even being welcomed on stage to dance with her. Her enthusiasm was tangible. Everybody was knocked out by the show and loved every minute. If you missed Stacey don't worry, she returns in **April for her Tina Turner tribute show** and I heartily recommend you catch that performance.

Miles Waters Music Correspondent



YOUR LOCAL TRADESPEOPLE adverts@shire.org.uk

BUILDERS

Proud members of
Checkatrade.com
Where reputation matters



JANSON & SONS
Building & Landscaping



0117 909 8207 Call or Text 07388 211 528
JANSON & SONS
Building & Landscaping

Family run business
Many years of experience
Extensive knowledge of building regulations
Fully insured



- Landscaping & Tree surgery
- Turving & Artificial grass
- Paving & Patios
- Tarmac & Concreting
- Jet-washing & Garden maintenance
- Extensions & Roofing
- General Building & Maintenance
- Fencing & Decking

0117 909 8207
07388 211 528
Call today for free quote

ELECTRICIANS



Your Local **NICEIC** Approved Contractor's
Commercial & Domestic
FOR A PROFESSIONAL, RELIABLE, LOCAL SERVICE
"Where you the Customer comes First"

- Full / Part Rewires
- Consumer Unit Upgrades
- Earthing Upgrades
- Garden Lighting
- Showers
- Landlord Safety Checks / PAT
- Electrical Condition Reports (EICR)
- Fault Finding / Repairs
- Security Alarms
- Emergency Lighting
- Fire / Smoke Alarms
- Networking
- CCTV
- Appliance Repairs

PART P REGISTERED
Certificated & Guaranteed Work
Fully Insured

NICEIC APPROVED CONTRACTOR **NICEIC** DOMESTIC INSTALLER

For a Free Quotation
Contact Paul

07799 050947
0117 9821979



www.eylesbuilding.co.uk eylesbuilding@gmail.com
07825 184130 0117 336 0794

- Extensions / Newbuilds
- Refurbishments
- Brick Work / Block Work
- Patios / Garden Walls
- Plastering / Rendering
- Damp Proofing
- Drylining
- Maintenance

CARPENTERS

RICHARD CHILCOTT
CARPENTER

- Laminate Floors • Doors
- Skirting Boards • Dado Rails etc ...

Telephone: 0117 985 8347
Mobile: 07952 763 630
FOR FREE QUOTE

GAS SERVICES

FRANKLIN'S
GAS SERVICES



511036

BOILER INSTALLERS AND HEATING ENGINEERS
YOUR LOCAL GAS SERVICE ENGINEER
NO CALL OUT CHARGES
COMPETITIVE RATES
FULLY QUALIFIED ENGINEER

- BOILER INSTALLATIONS
- HEATING BREAKDOWNS
- BOILER SERVICES AND REPAIRS
- LANDLORD SAFETY TESTING AND GAS AND PAT
- GAS LEAKS COMMERCIAL AND DOMESTIC

07841870939

GATES

DOMESTIC GATES + INDUSTRIAL GATES
RAILINGS + BALASTRAS + SECURITY GRILLS

GATES PLUS



01454 632905 07887 986894

www.gatesplus.co.uk
"Victoria", Ableton Lane, Severn Beach, BS35 4PR

GARDEN MAINTENANCE



Get ready for summer with
GardenWorks
all your garden needs

Do you need a helping hand in your garden? I am a local, experienced and trusted gardener

- regular garden maintenance
- grass cutting
- garden clearance
- leaf clearance and tidy
- pruning & hedge cutting
- planting
- redesigning garden areas

For competitive rates and a reliable, friendly, high quality service contact Conrad

Tel 0117 9828023 or 0788 228968

PLUMBING AND HEATING

EDMOND
PLUMBING

Friendly, Reliable
Qualified Plumber

- ◆ Boilers and heating
- ◆ Replacement taps
- ◆ Electric and mixer showers
- ◆ All household plumbing requirements
- ◆ Bathroom, kitchen, shower room tiling
- ◆ All jobs guaranteed

NO CALL OUT CHARGE
Ring Ed on
07791 798544

A. AYLWIN
28 Years Experience

PLUMBING AND HEATING SERVICES
TEL: 07462 915355
Covering Bristol & the South West

107 Bradley Crescent
Shirehampton
Bristol
BS11 9SS



559809 maggsaylwin@gmail.com

KITCHENS

Need a New Kitchen

We provide Professional kitchen installation
Using qualified Tradesmen Guaranteed

If you're serious about getting
a quality fitted kitchen
at a competitive price

We also cater for budget kitchens
Competitive quotes

Contact Mike

07973687129

From someone who knows what he's doing!

PLASTERING

M^cCALL PLASTERING EST 1976

- OVER 30 YEARS EXPERIENCE
- INTERIOR & EXTERIOR
- QUALITY WORK
- COMPETITIVE RATES

**Call: 07909 937 229
or 0117 949 0147**

info@mccallconstruction.co.uk

PROPERTY MAINTENANCE

ROB'S PROPERTY MAINTENANCE & CLEANING SERVICE



For all those jobs that
still need doing...
I am here to help!

- Building & Property Maintenance
- Handyman
- Plastering • Rendering
- Decorating • Tiling
- Plumbing • Bathrooms
- Fascia/Guttering
- Gardening/Fencing

Private & commercial cleaning

ROB: 07891 450 047

robspropertymaintenance@yahoo.com

PAINTING & DECORATING

R.B Painting Services

Interior & Exterior

07890 411 653



L&K'S DECORATING

For a friendly, professional, reliable service at competitive rates.

Call Lee on: 07547 739917

TV & AERIALS

THE AERIAL MAN

TV Aerial and Satellite Specialist

0117 967 9028

SEE OUR AD ON PAGE 8

MOTORING

PRICE Bros.Ltd

Auto Engineering



Bristol's Leading
Engine Reconditioners...

- GENERAL REPAIRS
- EXHAUSTS & BRAKES
- AIR CONDITIONING SPECIALISTS
- DE GAS RE-GAS & REPAIRS

We are very large
stockists of engine
components for cars &
Commercial engines



CALL 0117 982 1064

Fax: 0117 982 3700 - Portview Road, Avonmouth, Bristol BS11 9LD
www.pricebrosengineering.co.uk

WINDOWS



- Misty Windows
- Broken Handles
- Damaged Hinges
- Broken Locks
- Door Repairs



ALL REPAIRS UNDERTAKEN - No Job Too Small
"A friendly and reliable service."

For a Free, no-obligation quote please contact us on:

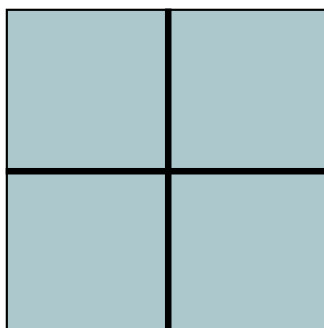


www.win-doc.com
thewindowdoctorsltd@gmail.com



0117 982 2870

Servicing Bristol & surrounding areas



Avonmouth Windows Ltd

www.AvonmouthWindowsLtd.co.uk

07968 804126 • 0117 307 0190

SPORT IN SHIREHAMPTON



City and Port of Bristol Bowling Club

From its very early days the club has always been something more than a club that just played bowls.

Having been **founded in June 1970** the club quickly became established and organised. On **January 28th, 1971**, the Management Committee decided to have a dance at the PBA Club. It thought that it would need to sell 100 tickets in order to break even. The dance went ahead in March and was a great success, 227 tickets were sold, there is no record of how much the tickets cost but there was a net profit of £28 for bowling club funds. It was recorded that the bowling club was grateful to **Mr. K Griffey the Social Club Entertainment Officer** for providing a very good group and for providing the usual excellent facilities.

The initial dance was so successful that the Management Committee decided that there should be two dances each year. The next one followed in November of the same year.

There is record of dances continuing during the 1970s but by the 1980s **Presentation Evenings** included music for dancing rather than having dances alone. If anyone has memories of the early dances or any photographs, please contact **David Hinksman**.

As an aside from social activities, the annual membership fee for the first season was £2 and the cost per game – later called green fee - was one shilling, this was pre-decimalisation!! In the club's final season, a year's membership was £100 and the green fee, £2.



Presentation evening — probably 1983 - music to dance to would have followed the presentation of trophies. A group called The Dresdens were firm favourites and may well have provided the music on this occasion.



March 12th 2020 saw Heather Champion become the clubs first and only Life Member.



Big Band Night - April 7th 2022. Bandleader Andrew Champion is at the microphone.



The bands vocalist at the Big Band Night was - and still is Natalie - daughter of Band Leader Andrew.

51 years on from the first club dance, on **April 7th, 2022**, we find a Big Band Night featuring the **David Salt Big Band** lead by **Andrew Champion**. This was a night of traditional big band music which provided the band with the opportunity to perform after Covid restrictions prevented them from doing so, and also enabled the Bowling Club to generate much needed funds. It also provided entertainment for club members, friends, and the general public.

There is a strong link between the band and the Bowling Club, Andrew Champion's mother **Heather** was, for many years a leading member, as was her late Husband, and Andrews father **Brian**. Heather held several important posts and when she retired was made the clubs one and only ever **Life Member**

in March 2020. To complete the link Heathers Grand Daughter **Natalie** is the bands vocalist.

The Annual **Winter Bowling Break** is just over a month away and this year 24 people will make the journey to **Torquay** for an enjoyable five days, staying at the splendid **Toorak Hotel**. The club has been to the TLH in Torquay for the Winter Break for many years, only occasionally going to another venue, (some bowlers will remember the **Dorset Golf and Country Club** and the **Ashbury Manor** experience), crafts, archery, lots of food and all.

If you have memories of the club whether it's on the green or in other ways, please tell David Hinksman on 07932 387217

Calling All Schools, Youth Groups and Sports Clubs in Shire; We Want To Hear More from You!
- See page 6 for details

THRIVE 

Health, fitness and performance, for life.

A bespoke service offering:

Soft Tissue Massage
Personal Training
Strength & Conditioning

Shirehampton & Clifton based (studio, mobile or online)

Contact Lee on: 07890632948 lee@thrivesouthwest.co.uk

www.thrivesouthwest.co.uk



Lawyers For Your Business and Family

We can help with:

- Residential Property Sales and Purchases
 - Commercial Property Sales and Purchases
 - Divorce and Family Disputes
- Business and Company Transactions
 - Wills Trusts and Probate
 - Powers of Attorney
 - Commercial Contracts and Trademark Law
- Mediation and Dispute Resolution
- Civil and Commercial Litigation
 - Employment Issues
 - Road Transport
 - Caring for Others/the Elderly

Telephone us now on: 0117 923 5562

**AMD Solicitors,
2 Station Road,
Shirehampton,
Bristol, BS11 9TT
www.amdsolicitors.com**



SHIRE ADVICE SERVICE

Free Advice Sessions

*Shirehampton Health Centre, Pembroke Road,
Shirehampton*

Tuesdays from 10am

To make an appointment call 0117 9515751

ShireStrong Kettlebells Club

Greetings from Linda at ShireStrong Kettlebell Club! As we kick off the New Year, our community is buzzing with renewed enthusiasm and energy after a well-deserved break. At ShireStrong, we're not just about lifting kettlebells; we're about building a supportive, inclusive community that embraces individuals of all ages and abilities.

What sets us apart is our commitment to creating an environment where everyone feels welcome and supported on their fitness journey. Kettlebells, often underestimated, can be incredibly rewarding when approached with the right guidance. Whether you're a seasoned fitness enthusiast or a beginner, **ShireStrong** is the place for you to discover the transformative power of kettlebell training.

As we entered 2024, I took the opportunity to gather feedback from our cherished club members. The responses were amazing:

"I love the supportive nature of kettlebells. Individuals with a common goal lifting each other up and motivating to be the best version of ourselves."

"Kettlebells have not only boosted my confidence, but they've given my mental health a boost. Friendly groups all helping each other."

"Supportive and encouraging classes, a lovely mix of people. Would recommend to anyone wanting to get strong and feel powerful."



These testimonials reinforce the idea that ShireStrong is more than just a fitness club; it's a community that fosters personal growth and well-being. It's heartening to witness the positive impact the club has on the lives of individuals within the community.

Kettlebell training is a fantastic way to maintain and build strength, stamina, and mobility, especially as we age. Our classes are designed to cater to all ages and fitness levels, ensuring that everyone can participate and thrive.

If you're unsure whether kettlebells are right for you, I invite you to reach out to me personally. Come and experience the camaraderie, encouragement, and strength-building that defines ShireStrong. My contact details and class information can be found in our advertisement on page 5.

I look forward to hearing from you.

Linda

CHOICE CARPETS

Free measuring and quotation service and samples to your home

Carpets from £6.99 sqmt for bleach cleanable manmade £11.99 sqmt for wool mix and cushion vinyl from £8.99 sqmt





Luxury vinyl tiles and planks samples and also laminate flooring samples in our showroom

We are always happy to help with your budget and rely on feedback and recommendation

Quality and professional fitting team on hand with most flooring fitted within days from ordering

Check out our website www.choice-carpets.co.uk for info, opening times and gallery

01179 826988

Yoga Classes

Mondays 6.00 to 7.15pm
Shirehampton Public Hall
Other classess available

Safe, effective and suitable for all. Yoga promotes well-being in body and mind

Contact **Suzi Griffin** (CYS, AYS, BWY)

07776 321 989 suzi@yogafriendly.co.uk

